

NEET 2022

Question Paper with Answer

17th July 2022 (Sunday)

CODE - T3

Umeed
RANK KI HO
ya Selection ki,
Jeet Nischit hai



MOTION®

NEET 2021 RESULT

AIR-62 **AIR-66** **AIR-72** **AIR-90** **AIR-97**



Utkarsh

Shreyash Raj

Geeti Gayatree Panda

Sooraj Nanda

Vikrant Kr. Mishra

STUDENTS UNDER 200 CATEGORY RANK



Kenil Somani
Gen-EWS

Saurabh Raja
OBC-NCL

Prem Kumar
OBC-NCL

Shekhar Kumar Singh
Gen-EWS



Karthik Kanna
Gen

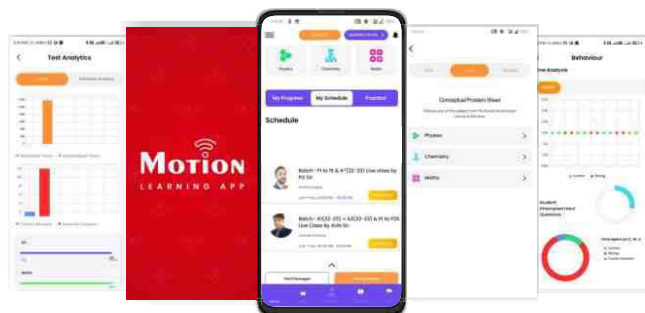
Tanish
Gen-EWS

Devansh Mishra
Gen-EWS

Students Qualified in NEET **3176 / 3411 = 93.12%**

MOTION LEARNING APP

will accompany you in the journey of preparation till your selection



Climb the ladder and know How it works?

- ◆ Study Online with Animated & Best quality recorded lectures designed by Kota's Best Teachers.
- ◆ Use notes and DPPs for a quick revision and analysis.
- ◆ Customized test paper creating tool for improved practicing.
- ◆ Learn something new everyday for full preparation.
- ◆ Behavior is a value-added tool to check the consistency.
- ◆ Performance analysis and actual feedback to parents via App.

Scan QR Code for
download the app



T3

Section - A (Physics)

1. A long solenoid of radius 1 mm has 100 turns per mm. If 1 A current flows in the solenoid, the magnetic field strength at the centre of the solenoid is:

- (1) 12.56×10^{-2} T
- (2) 12.56×10^{-4} T
- (3) 6.28×10^{-4} T
- (4) 6.28×10^{-2} T

$\frac{N}{R}$ $B_0 = 2 \mu_0 n i$

2. A biconvex lens has radii of curvature, 20 cm each. If the refractive index of the material of the lens is 1.5, the power of the lens is:-

- (1) +20 D
- (2) +5D
- (3) infinity
- (4) +2D

3. Let T_1 and T_2 be the energy of an electron in the first and second excited states of hydrogen atom, respectively. According to the Bohr's model of an atom, the ratio $T_1 : T_2$ is:

- (1) 4 : 1
- (2) 4 : 9
- (3) 9 : 4
- (4) 1 : 4

4. The peak voltage of the ac source is equal to:

- (1) the rms value of the ac source
- (2) $\sqrt{2}$ times the rms value of the ac source
- (3) $1/\sqrt{2}$ times the rms value of the ac source
- (4) the value of voltage supplied to the circuit

5. Match List - I with List - II:

List - I (Electromagnetic waves)	List - II (Wavelength)
(a) AM radio waves	(i) 10^{-10} m
(b) Microwaves	(ii) 10^2 m
(c) Infrared radiations	(iii) 10^{-2} m
(d) X-rays	(iv) 10^{-4} m

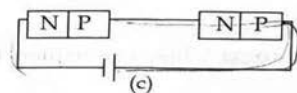
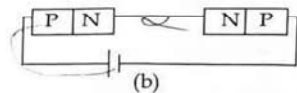
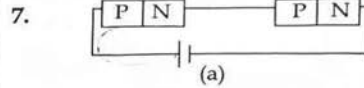
Choose the correct answer from the options given below:

- (1) (a) - (iii), (b) - (ii), (c) - (i), (d) - (iv)
- (2) (a) - (iii), (b) - (iv), (c) - (ii), (d) - (i)
- (3) (a) - (ii), (b) - (iii), (c) - (iv), (d) - (i)
- (4) (a) - (iv), (b) - (iii), (c) - (ii), (d) - (i)

6. A square loop of side 1 m and resistance 1 Ω is placed in a magnetic field of 0.5 T. If the plane of loop is perpendicular to the direction of magnetic field, the magnetic flux through the loop is:

- (1) 0.5 weber
- (2) 1 weber
- (3) zero weber
- (4) 2 weber

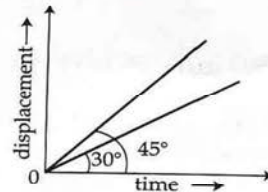
$\Phi = B \cdot A$
 $\Phi = 0.5 \times 1$



In the given circuits (a), (b) and (c), the potential drop across the two p-n junctions are equal in:

- (1) Circuit (b) only
- (2) Circuit (c) only
- (3) Both circuits (a) and (c)
- (4) Circuit (a) only

8. The displacement-time graphs of two moving particles make angles of 30° and 45° with the x-axis as shown in the figure. The ratio of their respective velocity is:



- (1) 1 : 1
- (2) 1 : 2
- (3) 1 : $\sqrt{3}$
- (4) $\sqrt{3} : 1$

9. Two objects of mass 10 kg and 20 kg respectively are connected to the two ends of a rigid rod of length 10 m with negligible mass. The distance of the center of mass of the system from the 10 kg mass is:

- (1) $\frac{20}{3}$ m
- (2) 10 m
- (3) 5 m
- (4) $\frac{10}{3}$ m

$B I M A$
 $\frac{1}{R} B = 0.5$

10. The angle between the electric lines of force and the equipotential surface is:

- (1) 45°
- (2) 90°
- (3) 180°
- (4) 0°

$\frac{d\phi}{dt} = \frac{1}{R}$
 0.5×1

Get upto 100% SCHOLARSHIP on the basis of NEET 2022

NEET Score	FEE After Scholarship
600+	10,000 (Kit Cost)
571-600	22,881
551-570	34,322
531-550	40,042
511-530	45,762

11. If the initial tension on a stretched string is doubled, then the ratio of the initial and final speeds of a transverse wave along the string is :

- (1) $\sqrt{2} : 1$
- (2) $1 : \sqrt{2}$
- (3) $1 : 2$
- (4) $1 : 1$



12. When two monochromatic lights of frequency, ν and $\frac{\nu}{2}$ are incident on a photoelectric metal, their

stopping potential becomes $\frac{V_s}{2}$ and V_s respectively.

The threshold frequency for this metal is :

- (1) 3ν
- (2) $\frac{2}{3}\nu$
- (3) $\frac{3}{2}\nu$
- (4) 2ν

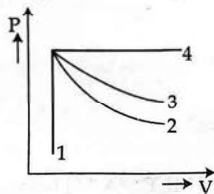
$$\frac{1}{\lambda} = (\mu - 1) \left\{ \frac{1}{R_1} - \frac{1}{R_2} \right\}$$

$$\frac{10 \times 10^3}{30} = \frac{10^4}{30}$$

13. As the temperature increases, the electrical resistance :

- (1) decreases for both conductors and semiconductors
- (2) increases for conductors but decreases for semiconductors
- (3) decreases for conductors but increases for semiconductors
- (4) increases for both conductors and semiconductors

14. An ideal gas undergoes four different processes from the same initial state as shown in the figure below. Those processes are adiabatic, isothermal, isobaric and isochoric. The curve which represents the adiabatic process among 1, 2, 3 and 4 is :



- (1) 2
- (2) 3
- (3) 4
- (4) 1

$$\frac{1}{100} \rightarrow 0.5$$

$$\frac{2}{20} \rightarrow 0.1$$

3

$$E = \frac{P}{t}$$

T3

15. The energy that will be ideally radiated by a 100 kW transmitter in 1 hour is :

- (1) $36 \times 10^4 \text{ J}$
- (2) $36 \times 10^5 \text{ J}$
- (3) $1 \times 10^5 \text{ J}$
- (4) $36 \times 10^7 \text{ J}$

$$\frac{100}{3600}$$

16. The ratio of the distances travelled by a freely falling body in the 1st, 2nd, 3rd and 4th second :

- (1) $1 : 4 : 9 : 16$
- (2) $1 : 3 : 5 : 7$
- (3) $1 : 1 : 1 : 1$
- (4) $1 : 2 : 3 : 4$

$$100 \times 10$$

17. Given below are two statements :

Statement I :

Biot-Savart's law gives us the expression for the magnetic field strength of an infinitesimal current element (Idl) of a current carrying conductor only.

Statement II :

Biot-Savart's law is analogous to Coulomb's inverse square law of charge q , with the former being related to the field produced by a scalar source, Idl while the latter being produced by a vector source, q .

In light of above statements choose the most appropriate answer from the options given below :

- (1) Both Statement I and Statement II are incorrect
- (2) Statement I is correct and Statement II is incorrect
- (3) Statement I is incorrect and Statement II is correct
- (4) Both Statement I and Statement II are correct

18. When light propagates through a material medium of relative permittivity ϵ_r and relative permeability μ_r , the velocity of light, v is given by : (c - velocity of light in vacuum)

- (1) $v = \sqrt{\frac{\mu_r}{\epsilon_r}} c$
- (2) $v = \sqrt{\frac{\epsilon_r}{\mu_r}} c$
- (3) $v = \frac{c}{\sqrt{\epsilon_r \mu_r}}$
- (4) $v = c$

$$v = \frac{c}{\sqrt{\epsilon_r \mu_r}}$$

$$0.5 \left\{ \frac{1}{20} + \frac{1}{20} \right\}$$

19. A body of mass 60 g experiences a gravitational force of 3.0 N, when placed at a particular point. The magnitude of the gravitational field intensity at that point is :

- (1) 50 N/kg
- (2) 20 N/kg
- (3) 180 N/kg
- (4) 0.05 N/kg

$$\frac{0.5 \times 10}{10 \times 10} = \frac{0.5}{100} = 0.005$$

Get upto 100% SCHOLARSHIP on the basis of NEET 2022

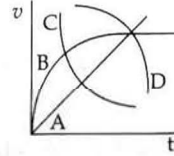
NEET Score	FEE After Scholarship
491-510	51,483
471-490	57,203
451-470	62,923
431-450	68,644
351-430	80,084
Only Qualified	91,525

T3

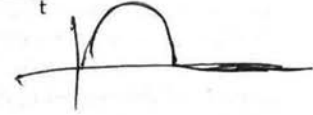
20. In half wave rectification, if the input frequency is 60 Hz, then the output frequency would be:
 (1) 30 Hz
 (2) 60 Hz
 (3) 120 Hz
 (4) zero
21. If a soap bubble expands, the pressure inside the bubble:
 (1) increases
 (2) remains the same
 (3) is equal to the atmospheric pressure
 (4) decreases
22. The ratio of the radius of gyration of a thin uniform disc about an axis passing through its centre and normal to its plane to the radius of gyration of the disc about its diameter is:
 (1) $\sqrt{2} : 1$
 (2) 4 : 1
 (3) 1 : $\sqrt{2}$
 (4) 2 : 1
23. Two hollow conducting spheres of radii R_1 and R_2 ($R_1 \gg R_2$) have equal charges. The potential would be:
 (1) more on smaller sphere
 (2) equal on both the spheres
 (3) dependent on the material property of the sphere
 (4) more on bigger sphere
24. Plane angle and solid angle have:
 (1) Dimensions but no units
 (2) No units and no dimensions
 (3) Both units and dimensions
 (4) Units but no dimensions
25. Two resistors of resistance, 100 Ω and 200 Ω are connected in parallel in an electrical circuit. The ratio of the thermal energy developed in 100 Ω to that in 200 Ω in a given time is:
 (1) 2 : 1
 (2) 1 : 4
 (3) 4 : 1
 (4) 1 : 2
26. The angular speed of a fly wheel moving with uniform angular acceleration changes from 1200 rpm to 3120 rpm in 16 seconds. The angular acceleration in rad/s^2 is:
 (1) 4π
 (2) 12π
 (3) 104π
 (4) 2π

4

27. A spherical ball is dropped in a long column of a highly viscous liquid. The curve in the graph shown, which represents the speed of the ball (v) as a function of time (t) is:



- (1) B
 (2) C
 (3) D
 (4) A



28. A light ray falls on a glass surface of refractive index $\sqrt{3}$, at an angle 60° . The angle between the refracted and reflected rays would be:
 (1) 60°
 (2) 90°
 (3) 120°
 (4) 30°
29. An electric lift with a maximum load of 2000 kg (lift + passengers) is moving up with a constant speed of 1.5 ms^{-1} . The frictional force opposing the motion is 3000 N. The minimum power delivered by the motor to the lift in watts is: ($g = 10 \text{ ms}^{-2}$)
 (1) 20000
 (2) 34500
 (3) 23500
 (4) 23000
30. A shell of mass m is at rest initially. It explodes into three fragments having mass in the ratio 2 : 2 : 1. If the fragments having equal mass fly off along mutually perpendicular directions with speed v , the speed of the third (lighter) fragment is:
 (1) $\sqrt{2} v$
 (2) $2\sqrt{2} v$
 (3) $3\sqrt{2} v$
 (4) v
31. The dimensions $[\text{MLT}^{-2}\text{A}^{-2}]$ belong to the:
 (1) self inductance
 (2) magnetic permeability
 (3) electric permittivity
 (4) magnetic flux

Get upto 100% SCHOLARSHIP
on the basis of NEET 2022

NEET ACHIEVER BATCH
For Class 12th & 12th Pass Students

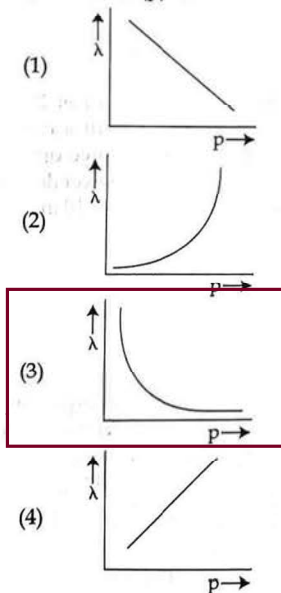
New Batch Starting from :
20th & 27th July 2022

NEET Score	FEE After Scholarship
600+	10,000 (Kit Cost)
571-600	22,881
551-570	34,322
531-550	40,042
511-530	45,762

32. A copper wire of length 10 m and radius $(10^{-2}/\sqrt{\pi})$ m has electrical resistance of 10Ω . The current density in the wire for an electric field strength of 10 (V/m) is:
- (1) 10^6 A/m²
 - (2) 10^{-5} A/m²
 - (3) 10^5 A/m²**
 - (4) 10^4 A/m²

33. In a Young's double slit experiment, a student observes 8 fringes in a certain segment of screen when a monochromatic light of 600 nm wavelength is used. If the wavelength of light is changed to 400 nm, then the number of fringes he would observe in the same region of the screen is:
- (1) 8
 - (2) 9
 - (3) 12**
 - (4) 6
- JKR*

34. The graph which shows the variation of the de Broglie wavelength (λ) of a particle and its associated momentum (p) is:



JKR

$E = \frac{1}{2}mv^2$

$\frac{mv^2}{2} = \frac{1}{2}mp^2$

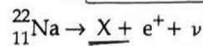
$\frac{mv^2}{2} = \frac{1}{2}m \left(\frac{h}{m\lambda}\right)^2$

$\frac{mv^2}{2} = \frac{1}{2} \frac{h^2}{m\lambda^2}$

$\lambda = \frac{h}{mv}$

$\lambda \propto \frac{1}{p}$

35. In the given nuclear reaction, the element X is:



- (1) ${}_{10}^{23}\text{Ne}$
- (2) ${}_{10}^{22}\text{Ne}$**
- (3) ${}_{12}^{22}\text{Mg}$
- (4) ${}_{11}^{23}\text{Na}$



Section - B (Physics)

36. A series LCR circuit with inductance 10 H, capacitance $10 \mu\text{F}$, resistance 50Ω is connected to an ac source of voltage, $V = 200 \sin(100t)$ volt. If the resonant frequency of the LCR circuit is ν_0 and the frequency of the ac source is ν , then:

(1) $\nu_0 = \nu = \frac{50}{\pi}$ Hz

(2) $\nu_0 = \frac{50}{\pi}$ Hz, $\nu = 50$ Hz

(3) $\nu = 100$ Hz; $\nu_0 = \frac{100}{\pi}$ Hz

(4) $\nu_0 = \nu = 50$ Hz

am m
91 2

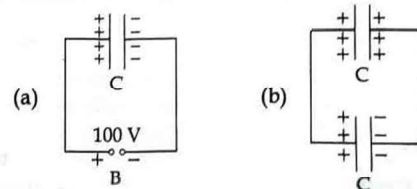
37. Match List - I with List - II:

- | List - I | List - II |
|------------------------------------|--------------------------|
| (a) Gravitational constant (G) | (i) $[L^2T^{-2}]$ |
| (b) Gravitational potential energy | (ii) $[M^{-1}L^3T^{-2}]$ |
| (c) Gravitational potential | (iii) $[LT^{-2}]$ |
| (d) Gravitational intensity | (iv) $[ML^2T^{-2}]$ |

Choose the correct answer from the options given below:

- (1) (a) - (ii), (b) - (iv), (c) - (i), (d) - (iii)**
- (2) (a) - (ii), (b) - (iv), (c) - (iii), (d) - (i)
- (3) (a) - (iv), (b) - (ii), (c) - (i), (d) - (iii)
- (4) (a) - (ii), (b) - (i), (c) - (iv), (d) - (iii)

38. A capacitor of capacitance $C = 900 \text{ pF}$ is charged fully by 100 V battery B as shown in figure (a). Then it is disconnected from the battery and connected to another uncharged capacitor of capacitance $C = 900 \text{ pF}$ as shown in figure (b). The electrostatic energy stored by the system (b) is:



- ~~(1) 3.25×10^{-6} J~~
- (2) 2.25×10^{-6} J**
- (3) 1.5×10^{-6} J
- (4) 4.5×10^{-6} J

Get upto 100% SCHOLARSHIP on the basis of NEET 2022

NEET Score	FEE After Scholarship
491-510	51,483
471-490	57,203
451-470	62,923
431-450	68,644
351-430	80,084
Only Qualified	91,525

T3

39. Two transparent media A and B are separated by a plane boundary. The speed of light in those media are 1.5×10^8 m/s and 2.0×10^8 m/s, respectively. The critical angle for a ray of light for these two media is:

- (1) $\sin^{-1}(0.750)$
 (2) $\tan^{-1}(0.500)$
 (3) $\tan^{-1}(0.750)$
 (4) $\sin^{-1}(0.500)$

40. The volume occupied by the molecules contained in 4.5 kg water at STP, if the intermolecular forces vanish away is:

- (1) 5.6×10^3 m³
 (2) 5.6×10^{-3} m³
 (3) 5.6 m³
 (4) 5.6×10^6 m³

41. A ball is projected with a velocity, 10 ms^{-1} , at an angle of 60° with the vertical direction. Its speed at the highest point of its trajectory will be:

- (1) $5\sqrt{3} \text{ ms}^{-1}$
 (2) 5 ms^{-1}
 (3) 10 ms^{-1}
 (4) Zero

42. Given below are two statements: One is labelled as Assertion (A) and the other is labelled as Reason (R).

Assertion (A):

The stretching of a spring is determined by the shear modulus of the material of the spring.

Reason (R):

A coil spring of copper has more tensile strength than a steel spring of same dimensions.

In the light of the above statements, choose the most appropriate answer from the options given below:

- (1) Both (A) and (R) are true and (R) is not the correct explanation of (A)
 (2) (A) is true but (R) is false
 (3) (A) is false but (R) is true
 (4) Both (A) and (R) are true and (R) is the correct explanation of (A)

43. Two pendulums of length 121 cm and 100 cm start vibrating in phase. At some instant, the two are at their mean position in the same phase. The minimum number of vibrations of the shorter pendulum after which the two are again in phase at the mean position is:

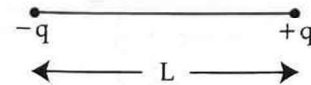
- (1) 9
 (2) 10
 (3) 8
 (4) 11

6

44. A big circular coil of 1000 turns and average radius 10 m is rotating about its horizontal diameter at 2 rad s^{-1} . If the vertical component of earth's magnetic field at that place is $2 \times 10^{-5} \text{ T}$ and electrical resistance of the coil is 12.56Ω , then the maximum induced current in the coil will be:

- (1) 1.5 A
 (2) 1 A
 (3) 2 A
 (4) 0.25 A

45. Two point charges $-q$ and $+q$ are placed at a distance of L , as shown in the figure.



The magnitude of electric field intensity at a distance R ($R \gg L$) varies as:

- (1) $\frac{1}{R^3}$
 (2) $\frac{1}{R^4}$
 (3) $\frac{1}{R^6}$
 (4) $\frac{1}{R^2}$

46. A nucleus of mass number 189 splits into two nuclei having mass number 125 and 64. The ratio of radius of two daughter nuclei respectively is:

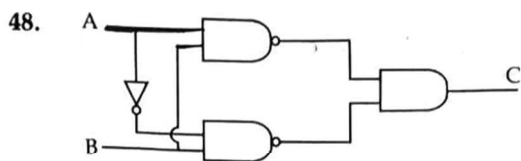
- (1) 4 : 5
 (2) 5 : 4
 (3) 25 : 16
 (4) 1 : 1

47. From Ampere's circuital law for a long straight wire of circular cross-section carrying a steady current, the variation of magnetic field in the inside and outside region of the wire is:

- (1) a linearly increasing function of distance upto the boundary of the wire and then linearly decreasing for the outside region.
 (2) a linearly increasing function of distance r upto the boundary of the wire and then decreasing one with $1/r$ dependence for the outside region.
 (3) a linearly decreasing function of distance upto the boundary of the wire and then a linearly increasing one for the outside region.
 (4) uniform and remains constant for both the regions.

Get upto 100% SCHOLARSHIP
on the basis of NEET 2022

NEET Score	FEE After Scholarship
600+	10,000 (Kit Cost)
571-600	22,881
551-570	34,322
531-550	40,042
511-530	45,762



The truth table for the given logic circuit is :

A	B	C
0	0	1
0	1	0
1	0	0
1	1	1

(1)

A	B	C
0	0	1
0	1	0
1	0	1
1	1	0

(2)

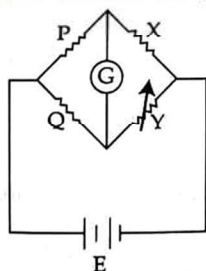
A	B	C
0	0	0
0	1	1
1	0	0
1	1	1

(3)

A	B	C
0	0	0
0	1	1
1	0	1
1	1	0

(4)

49. A wheatstone bridge is used to determine the value of unknown resistance X by adjusting the variable resistance Y as shown in the figure. For the most precise measurement of X, the resistances P and Q :



- (1) should be approximately equal and are small
 (2) should be very large and unequal
 (3) do not play any significant role
 (4) should be approximately equal to 2X

50. The area of a rectangular field (in m²) of length 55.3 m and breadth 25 m after rounding off the value for correct significant digits is :

- (1) 1382
 (2) 1382.5
 (3) 14×10^2
 (4) 138×10^1

Section - A (Chemistry)

51. Identify the incorrect statement from the following.

- (1) All the five 4d orbitals have shapes similar to the respective 3d orbitals.
 (2) In an atom, all the five 3d orbitals are equal in energy in free state.
 (3) The shapes of d_{xy} , d_{yz} , and d_{zx} orbitals are similar to each other ; and $d_{x^2-y^2}$ and d_{z^2} are similar to each other.
 (4) All the five 5d orbitals are different in size when compared to the respective 4d orbitals.

52. Given below are two statements :

Statement I :

The acidic strength of monosubstituted nitrophenol is higher than phenol because of electron withdrawing nitro group.

Statement II :

o-nitrophenol, *m*-nitrophenol and *p*-nitrophenol will have same acidic strength as they have one nitro group attached to the phenolic ring.

In the light of the above statements, choose the most appropriate answer from the options given below :

- (1) Both Statement I and Statement II are incorrect.
 (2) Statement I is correct but Statement II is incorrect.
 (3) Statement I is incorrect but Statement II is correct.
 (4) Both Statement I and Statement II are correct.

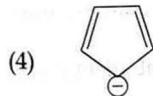
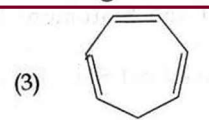
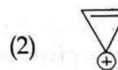
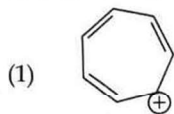
53. The incorrect statement regarding chirality is :

- (1) The product obtained by S_N2 reaction of haloalkane having chirality at the reactive site shows inversion of configuration.
 (2) Enantiomers are superimposable mirror images on each other.
 (3) A racemic mixture shows zero optical rotation.
 (4) S_N1 reaction yields 1 : 1 mixture of both enantiomers.

Get upto 100% SCHOLARSHIP
on the basis of NEET 2022

NEET Score	FEE After Scholarship
491-510	51,483
471-490	57,203
451-470	62,923
431-450	68,644
351-430	80,084
Only Qualified	91,525

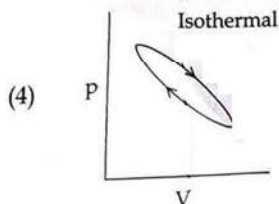
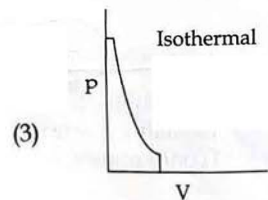
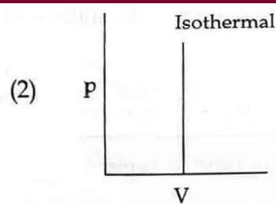
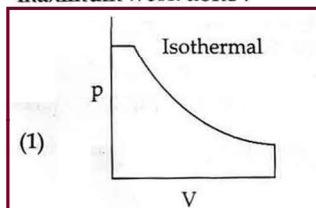
54. Which compound amongst the following is not an aromatic compound ?



55. Amongst the following which one will have maximum 'lone pair - lone pair' electron repulsions ?



56. Which of the following p-V curve represents maximum work done ?



57. The IUPAC name of the complex - $[\text{Ag}(\text{H}_2\text{O})_2][\text{Ag}(\text{CN})_2]$ is :

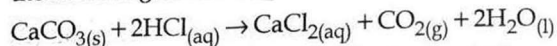
(1) diaquasilver(II) dicyanidoargentate(II)

(2) dicyanidosilver(I) diaquaargentate(I)

(3) diaquasilver(I) dicyanidoargentate(I)

(4) dicyanidosilver(II) diaquaargentate(II)

58. What mass of 95% pure CaCO_3 will be required to neutralise 50 mL of 0.5 M HCl solution according to the following reaction ?



[Calculate upto second place of decimal point]

(1) 1.32 g

(2) 3.65 g

(3) 9.50 g

(4) 1.25 g

59. Match List - I with List - II.

List - I (Drug class)	List - II (Drug molecule)
(a) Antacids	(i) Salvarsan
(b) Antihistamines	(ii) Morphine
(c) Analgesics	(iii) Cimetidine
(d) Antimicrobials	(iv) Seldane

Choose the correct answer from the options given below :

(1) (a) - (iii), (b) - (iv), (c) - (ii), (d) - (i)

(2) (a) - (i), (b) - (iv), (c) - (ii), (d) - (iii)

(3) (a) - (iv), (b) - (iii), (c) - (i), (d) - (ii)

(4) (a) - (iii), (b) - (ii), (c) - (iv), (d) - (i)

60. Match List - I with List - II.

List - I (Products formed)	List - II (Reaction of carbonyl compound with)
(a) Cyanohydrin	(i) NH_2OH
(b) Acetal	(ii) RNH_2
(c) Schiff's base	(iii) alcohol
(d) Oxime	(iv) HCN

Choose the correct answer from the options given below :

(1) (a) - (ii), (b) - (iii), (c) - (iv), (d) - (i)

(2) (a) - (i), (b) - (iii), (c) - (ii), (d) - (iv)

(3) (a) - (iv), (b) - (iii), (c) - (ii), (d) - (i)

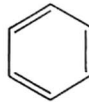
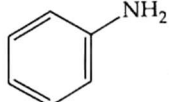
(4) (a) - (iii), (b) - (iv), (c) - (ii), (d) - (i)

Get upto 100% SCHOLARSHIP
on the basis of NEET 2022

NEET Score	FEE After Scholarship
600+	10,000 (Kit Cost)
571-600	22,881
551-570	34,322
531-550	40,042
511-530	45,762

NEET ACHIEVER BATCH
For Class 12th & 12th Pass Students

New Batch Starting from :
20th & 27th July 2022

61. Given below are two statements : one is labelled as Assertion (A) and the other is labelled as Reason (R).
Assertion (A) : ICl is more reactive than I₂.
Reason (R) : I-Cl bond is weaker than I-I bond.
In the light of the above statements, choose the most appropriate answer from the options given below :
- Both (A) and (R) are correct but (R) is not the correct explanation of (A).
 - (A) is correct but (R) is not correct.
 - (A) is not correct but (R) is correct.
 - Both (A) and (R) are correct and (R) is the correct explanation of (A).
62. Which one is not correct mathematical equation for Dalton's Law of partial pressure ? Here p = total pressure of gaseous mixture
- $p = n_1 \frac{RT}{V} + n_2 \frac{RT}{V} + n_3 \frac{RT}{V}$
 - $p_i = \chi_i p$, where p_i = partial pressure of i^{th} gas
 χ_i = mole fraction of i^{th} gas in gaseous mixture
 - $p_i = \chi_i p_i^{\circ}$, where χ_i = mole fraction of i^{th} gas in gaseous mixture
 p_i° = pressure of i^{th} gas in pure state
 - $p = p_1 + p_2 + p_3$
63. Which amongst the following is incorrect statement ?
- C₂ molecule has four electrons in its two degenerate π molecular orbitals.
 - H₂⁺ ion has one electron.
 - O₂⁺ ion is diamagnetic.
 - The bond orders of O₂⁺, O₂, O₂⁻ and O₂²⁻ are 2.5, 2, 1.5 and 1, respectively.
64. In one molal solution that contains 0.5 mole of a solute, there is
- 500 g of solvent
 - 100 mL of solvent
 - 1000 g of solvent
 - 500 mL of solvent
65. Given below are two statements :
Statement I :
Primary aliphatic amines react with HNO₂ to give unstable diazonium salts.
Statement II :
Primary aromatic amines react with HNO₂ to form diazonium salts which are stable even above 300 K.
In the light of the above statements, choose the most appropriate answer from the options given below :
- Both Statement I and Statement II are incorrect.
 - Statement I is correct but Statement II is incorrect.
 - Statement I is incorrect but Statement II is correct.
 - Both Statement I and Statement II are correct.
66. Given below are two statements :
Statement I :
The boiling points of the following hydrides of group 16 elements increases in the order
H₂O < H₂S < H₂Se < H₂Te.
Statement II :
The boiling points of these hydrides increase with increase in molar mass.
In the light of the above statements, choose the most appropriate answer from the options given below :
- Both Statement I and Statement II are incorrect
 - Statement I is correct but Statement II is incorrect
 - Statement I is incorrect but Statement II is correct
 - Both Statement I and Statement II are correct
67. Which of the following statement is not correct about diborane ?
- The four terminal B-H bonds are two centre two electron bonds.
 - The four terminal Hydrogen atoms and the two Boron atoms lie in one plane.
 - Both the Boron atoms are sp² hybridised.
 - There are two 3-centre-2-electron bonds.
68. Which of the following is suitable to synthesize chlorobenzene ?
- Phenol, NaNO₂, HCl, CuCl
 - , HCl
 - , HCl, Heating
 - Benzene, Cl₂, anhydrous FeCl₃

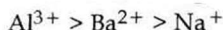
Get upto 100% SCHOLARSHIP
on the basis of NEET 2022

NEET Score	FEE After Scholarship
491-510	51,483
471-490	57,203
451-470	62,923
431-450	68,644
361-430	80,084
Only Qualified	91,525

69. Given below are two statements :

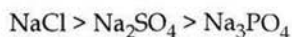
Statement I :

In the coagulation of a negative sol, the flocculating power of the three given ions is in the order -



Statement II :

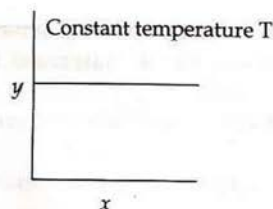
In the coagulation of a positive sol, the flocculating power of the three given salts is in the order -



In the light of the above statements, choose the most appropriate answer from the options given below :

- (1) Both Statement I and Statement II are incorrect.
- (2) Statement I is correct but Statement II is incorrect.
- (3) Statement I is incorrect but Statement II is correct.
- (4) Both Statement I and Statement II are correct.

70. The given graph is a representation of kinetics of a reaction.



The y and x axes for zero and first order reactions, respectively are

- (1) zero order ($y = \text{concentration}$ and $x = \text{time}$), first order ($y = \text{rate constant}$ and $x = \text{concentration}$)
- (2) zero order ($y = \text{rate}$ and $x = \text{concentration}$), first order ($y = t_{1/2}$ and $x = \text{concentration}$)
- (3) zero order ($y = \text{rate}$ and $x = \text{concentration}$), first order ($y = \text{rate}$ and $x = t_{1/2}$)
- (4) zero order ($y = \text{concentration}$ and $x = \text{time}$), first order ($y = t_{1/2}$ and $x = \text{concentration}$)

71. Gadolinium has a low value of third ionisation enthalpy because of

- (1) high exchange enthalpy
- (2) high electronegativity
- (3) high basic character
- (4) small size

72. Given below are two statements :

Statement I :

The boiling points of aldehydes and ketones are higher than hydrocarbons of comparable molecular masses because of weak molecular association in aldehydes and ketones due to dipole - dipole interactions.

Statement II :

The boiling points of aldehydes and ketones are lower than the alcohols of similar molecular masses due to the absence of H-bonding.

In the light of the above statements, choose the most appropriate answer from the options given below :

- (1) Both Statement I and Statement II are incorrect.
- (2) Statement I is correct but Statement II is incorrect.
- (3) Statement I is incorrect but Statement II is correct.
- (4) Both Statement I and Statement II are correct.

73. The IUPAC name of an element with atomic number 119 is

- (1) unnilenn
- (2) unununnium
- (3) ununoctium
- (4) ununennium

74. The pH of the solution containing 50 mL each of 0.10 M sodium acetate and 0.01 M acetic acid is [Given pK_a of $\text{CH}_3\text{COOH} = 4.57$]

- (1) 3.57
- (2) 4.57
- (3) 2.57
- (4) 5.57

75. The Kjeldahl's method for the estimation of nitrogen can be used to estimate the amount of nitrogen in which one of the following compounds ?

- (1)
- (2)
- (3)
- (4)

Get upto 100% SCHOLARSHIP
on the basis of NEET 2022

NEET Score	FEE After Scholarship
491-510	51,483
471-490	57,203
451-470	62,923
431-450	68,644
361-430	80,084
Only Qualified	91,525

76. Given below are two statements : one is labelled as **Assertion (A)** and the other is labelled as **Reason (R)**.
Assertion (A) :
In a particular point defect, an ionic solid is electrically neutral, even if few of its cations are missing from its unit cells.
Reason (R) :
In an ionic solid, Frenkel defect arises due to dislocation of cation from its lattice site to interstitial site, maintaining overall electrical neutrality.
In the light of the above statements, choose the most appropriate answer from the options given below :
- (1) Both (A) and (R) are correct but (R) is not the correct explanation of (A)
(2) (A) is correct but (R) is not correct
(3) (A) is not correct but (R) is correct
(4) Both (A) and (R) are correct and (R) is the correct explanation of (A)
77. Match List - I with List - II
- | | |
|-----------------------------------|------------------------------|
| List - I
(Hydrides) | List - II
(Nature) |
| (a) MgH ₂ | (i) Electron precise |
| (b) GeH ₄ | (ii) Electron deficient |
| (c) B ₂ H ₆ | (iii) Electron rich |
| (d) HF | (iv) Ionic |
- Choose the correct answer from the options given below :
- (1) (a) - (iii), (b) - (i), (c) - (ii), (d) - (iv)
(2) (a) - (i), (b) - (ii), (c) - (iv), (d) - (iii)
(3) (a) - (ii), (b) - (iii), (c) - (iv), (d) - (i)
(4) (a) - (iv), (b) - (i), (c) - (ii), (d) - (iii)
78. $\text{RMgX} + \text{CO}_2 \xrightarrow[\text{ether}]{\text{dry}} \text{Y} \xrightarrow{\text{H}_3\text{O}^+} \text{RCOOH}$
What is Y in the above reaction ?
(1) R₃CO⁻Mg⁺X
(2) RCOO⁻X⁺
(3) (RCOO)₂Mg
(4) RCOO⁻Mg⁺X
79. Given below are half cell reactions :
- $$\text{MnO}_4^- + 8\text{H}^+ + 5\text{e}^- \rightarrow \text{Mn}^{2+} + 4\text{H}_2\text{O},$$
- $$E_{\text{Mn}^{2+}/\text{MnO}_4^-}^\circ = -1.510 \text{ V}$$
- $$\frac{1}{2}\text{O}_2 + 2\text{H}^+ + 2\text{e}^- \rightarrow \text{H}_2\text{O},$$
- $$E_{\text{O}_2/\text{H}_2\text{O}}^\circ = +1.223 \text{ V}$$
- Will the permanganate ion, MnO₄⁻ liberate O₂ from water in the presence of an acid ?
(1) No, because E_{cell}[°] = -0.287 V
(2) Yes, because E_{cell}[°] = +2.733 V
(3) No, because E_{cell}[°] = -2.733 V
(4) Yes, because E_{cell}[°] = +0.287 V
80. Which statement regarding polymers is not correct ?
(1) Fibers possess high tensile strength.
(2) Thermoplastic polymers are capable of repeatedly softening and hardening on heating and cooling respectively.
(3) Thermosetting polymers are reusable.
(4) Elastomers have polymer chains held together by weak intermolecular forces.
81. At 298 K, the standard electrode potentials of Cu²⁺/Cu, Zn²⁺/Zn, Fe²⁺/Fe and Ag⁺/Ag are 0.34 V, -0.76 V, -0.44 V and 0.80 V, respectively.
On the basis of standard electrode potential, predict which of the following reaction can not occur ?
(1) CuSO₄(aq) + Fe(s) → FeSO₄(aq) + Cu(s)
(2) FeSO₄(aq) + Zn(s) → ZnSO₄(aq) + Fe(s)
(3) 2CuSO₄(aq) + 2Ag(s) → 2Cu(s) + Ag₂SO₄(aq)
(4) CuSO₄(aq) + Zn(s) → ZnSO₄(aq) + Cu(s)
82. The incorrect statement regarding enzymes is :
(1) Like chemical catalysts enzymes reduce the activation energy of bio processes.
(2) Enzymes are polysaccharides.
(3) Enzymes are very specific for a particular reaction and substrate.
(4) Enzymes are biocatalysts.
83. Identify the incorrect statement from the following
(1) The oxidation number of K in KO₂ is +4.
(2) Ionisation enthalpy of alkali metals decreases from top to bottom in the group
(3) Lithium is the strongest reducing agent among the alkali metals.
(4) Alkali metals react with water to form their hydroxides.
84. Match List - I with List - II.
- | | |
|-----------------|----------------------------------------|
| List - I | List - II |
| (a) Li | (i) absorbent for carbon dioxide |
| (b) Na | (ii) electrochemical cells |
| (c) KOH | (iii) coolant in fast breeder reactors |
| (d) Cs | (iv) photoelectric cell |
- Choose the correct answer from the options given below :
- (1) (a) - (iii), (b) - (iv), (c) - (ii), (d) - (i)
(2) (a) - (i), (b) - (iii), (c) - (iv), (d) - (ii)
(3) (a) - (ii), (b) - (iii), (c) - (i), (d) - (iv)
(4) (a) - (iv), (b) - (i), (c) - (iii), (d) - (ii)
85. Choose the correct statement :
Diamond is covalent and graphite is ionic.
(2) Diamond is sp³ hybridised and graphite is sp² hybridized.
(3) Both diamond and graphite are used as dry lubricants.
(4) Diamond and graphite have two dimensional network.

Get upto **100% SCHOLARSHIP**
on the basis of NEET 2022

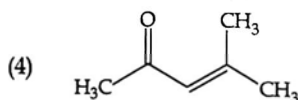
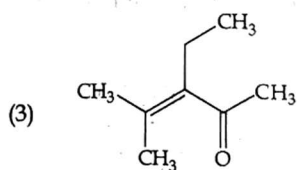
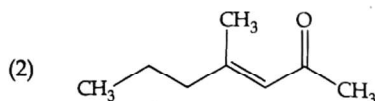
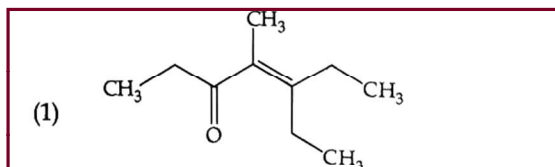
NEET Score	FEE After Scholarship
600+	10,000 (Kit Cost)
571-600	22,881
551-570	34,322
531-550	40,042
511-530	45,762

NEET ACHIEVER BATCH
For Class 12th & 12th Pass Students

New Batch Starting from :
20th & 27th July 2022

Section - B (Chemistry)

86. Which one of the following is not formed when acetone reacts with 2-pentanone in the presence of dilute NaOH followed by heating?



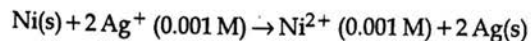
87. The order of energy absorbed which is responsible for the color of complexes

- (A) $[\text{Ni}(\text{H}_2\text{O})_2(\text{en})_2]^{2+}$
 (B) $[\text{Ni}(\text{H}_2\text{O})_4(\text{en})]^{2+}$ and
 (C) $[\text{Ni}(\text{en})_3]^{2+}$

is

- (1) (C) > (B) > (A)
 (2) (C) > (A) > (B)
 (3) (B) > (A) > (C)
 (4) (A) > (B) > (C)

88. Find the emf of the cell in which the following reaction takes place at 298 K



(Given that $E_{\text{cell}}^\circ = 10.5 \text{ V}$, $\frac{2.303 RT}{F} = 0.059$ at 298 K)

- (1) 1.385 V
 (2) 0.9615 V
 (3) 1.05 V
 (4) 1.0385 V

BONUS

89. Match List - I with List - II.

List - I (Ores)	List - II (Composition)
(a) Haematite	(i) Fe_3O_4
(b) Magnetite	(ii) ZnCO_3
(c) Calamine	(iii) Fe_2O_3
(d) Kaolinite	(iv) $[\text{Al}_2(\text{OH})_4\text{Si}_2\text{O}_5]$

Choose the correct answer from the options given below:

- (1) (a) - (iii), (b) - (i), (c) - (ii), (d) - (iv)
 (2) (a) - (ii), (b) - (i), (c) - (iv), (d) - (ii)
 (3) (a) - (i), (b) - (iii), (c) - (ii), (d) - (iv)
 (4) (a) - (i), (b) - (ii), (c) - (iii), (d) - (iv)

90. In the neutral or faintly alkaline medium, KMnO_4 oxidises iodide into iodate. The change in oxidation state of manganese in this reaction is from

- (1) +6 to +4
 (2) +7 to +3
 (3) +6 to +5
 (4) +7 to +4

91. Given below are two statements:

Statement I:

In Lucas test, primary, secondary and tertiary alcohols are distinguished on the basis of their reactivity with conc. $\text{HCl} + \text{ZnCl}_2$, known as Lucas Reagent.

Statement II:

Primary alcohols are most reactive and immediately produce turbidity at room temperature on reaction with Lucas Reagent.

In the light of the above statements, choose the most appropriate answer from the options given below:

- (1) Both Statement I and Statement II are incorrect.
 (2) Statement I is correct but Statement II is incorrect.
 (3) Statement I is incorrect but Statement II is correct.
 (4) Both Statement I and Statement II are correct.

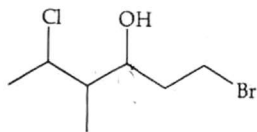
92. Compound X on reaction with O_3 followed by $\text{Zn}/\text{H}_2\text{O}$ gives formaldehyde and 2-methyl propanal as products. The compound X is:

- (1) 2-Methylbut-1-ene
 (2) 2-Methylbut-2-ene
 (3) Pent-2-ene
 (4) 3-Methylbut-1-ene

Get upto 100% SCHOLARSHIP
on the basis of NEET 2022

NEET Score	FEE After Scholarship
491-510	51,483
471-490	57,203
451-470	62,923
431-450	68,644
351-430	80,084
Only Qualified	91,525

93. The correct IUPAC name of the following compound is :



- (1) 6-bromo-2-chloro-4-methylhexan-4-ol
 (2) 1-bromo-4-methyl-5-chlorohexan-3-ol
 (3) 6-bromo-4-methyl-2-chlorohexan-4-ol
 (4) **1-bromo-5-chloro-4-methylhexan-3-ol**
94. A 10.0 L flask contains 64 g of oxygen at 27°C. (Assume O₂ gas is behaving ideally). The pressure inside the flask in bar is
 (Given R = 0.0831 L bar K⁻¹ mol⁻¹)
 (1) 498.6
 (2) 49.8
 (3) **4.9**
 (4) 2.5
95. The pollution due to oxides of sulphur gets enhanced due to the presence of :
 (a) particulate matter
 (b) ozone
 (c) hydrocarbons
 (d) hydrogen peroxide
 Choose the most appropriate answer from the options given below :
 (1) **(a), (b), (d) only**
 (2) (b), (c), (d) only
 (3) (a), (c), (d) only
 (4) (a), (d) only
96. For a first order reaction A → Products, initial concentration of A is 0.1 M, which becomes 0.001 M after 5 minutes. Rate constant for the reaction in min⁻¹ is
 (1) **0.9212**
 (2) 0.4606
 (3) 0.2303
 (4) 1.3818
97. Copper crystallises in fcc unit cell with cell edge length of 3.608 × 10⁻⁸ cm. The density of copper is 8.92 g cm⁻³. Calculate the atomic mass of copper.
 (1) 31.55 u
 (2) 60 u
 (3) 65 u
 (4) **63.1 u**

98. $3\text{O}_2(\text{g}) \rightleftharpoons 2\text{O}_3(\text{g})$

for the above reaction at 298 K, K_c is found to be 3.0 × 10⁻⁵⁹. If the concentration of O₂ at equilibrium is 0.040 M then concentration of O₃ in M is

- (1) 1.9 × 10⁻⁶³
 (2) 2.4 × 10³¹
 (3) 1.2 × 10²¹
 (4) **4.38 × 10⁻³²**
99. The product formed from the following reaction sequence is
- (i) LiAlH₄, H₂O
 (ii) NaNO₂ + HCl
 (iii) H₂O
- (1)
- (2)
- (3)
- (4)
100. If radius of second Bohr orbit of the He⁺ ion is 105.8 pm, what is the radius of third Bohr orbit of Li²⁺ ion ?
 (1) 15.87 pm
 (2) 1.587 pm
 (3) 158.7 Å
 (4) **158.7 pm**

Get upto 100% SCHOLARSHIP
on the basis of NEET 2022

NEET Score	FEE After Scholarship
600+	10,000 (Kit Cost)
571-600	22,881
551-570	34,322
531-550	40,042
511-530	45,762

101. Which of the following is not a method of *ex situ* conservation ?

- (1) National Parks
- (2) Micropropagation
- (3) Cryopreservation
- (4) *In vitro* fertilization

102. Given below are two statements :

Statement I :

The primary CO₂ acceptor in C₄ plants is phosphoenolpyruvate and is found in the mesophyll cells.

Statement II :

Mesophyll cells of C₄ plants lack RuBisCo enzyme.

In the light of the above statements, choose the correct answer from the options given below :

- (1) Both Statement I and Statement II are incorrect
- (2) Statement I is correct but Statement II is incorrect
- (3) Statement I is incorrect but Statement II is correct
- (4) Both Statement I and Statement II are correct

103. Read the following statements about the vascular bundles :

- (a) In roots, xylem and phloem in a vascular bundle are arranged in an alternate manner along the different radii.
- (b) Conjoint closed vascular bundles do not possess cambium
- (c) In open vascular bundles, cambium is present in between xylem and phloem
- (d) The vascular bundles of dicotyledonous stem possess endarch protoxylem
- (e) In monocotyledonous root, usually there are more than six xylem bundles present

Choose the correct answer from the options given below :

- (1) (b), (c), (d) and (e) Only
- (2) (a), (b), (c) and (d) Only
- (3) (a), (c), (d) and (e) Only
- (4) (a), (b) and (d) Only

BONUS

104. Given below are two statements :

Statement I :

Mendel studied seven pairs of contrasting traits in pea plants and proposed the Laws of Inheritance

Statement II :

Seven characters examined by Mendel in his experiment on pea plants were seed shape and colour, flower colour, pod shape and colour, flower position and stem height

In the light of the above statements, choose the correct answer from the options given below :

- (1) Both Statement I and Statement II are incorrect
- (2) Statement I is correct but Statement II is incorrect
- (3) Statement I is incorrect but Statement II is correct
- (4) Both Statement I and Statement II are correct

105. Which one of the following statements cannot be connected to Predation ?

- (1) It might lead to extinction of a species
- (2) Both the interacting species are negatively impacted
- (3) It is necessitated by nature to maintain the ecological balance
- (4) It helps in maintaining species diversity in a community

106. DNA polymorphism forms the basis of :

- (1) DNA finger printing
- (2) Both genetic mapping and DNA finger printing
- (3) Translation
- (4) Genetic mapping

107. Given below are two statements :

Statement I :

Cleistogamous flowers are invariably autogamous

Statement II :

Cleistogamy is disadvantageous as there is no chance for cross pollination

In the light of the above statements, choose the correct answer from the options given below :

- (1) Both Statement I and Statement II are incorrect
- (2) Statement I is correct but Statement II is incorrect
- (3) Statement I is incorrect but Statement II is correct
- (4) Both Statement I and Statement II are correct

Get upto 100% SCHOLARSHIP
on the basis of NEET 2022

NEET Score	FEE After Scholarship
491-510	51,483
471-490	57,203
451-470	62,923
431-450	68,644
351-430	80,084
Only Qualified	91,525

15

T3

108. In old trees the greater part of secondary xylem is dark brown and resistant to insect attack due to :-

- (a) secretion of secondary metabolites and their deposition in the lumen of vessels
- (b) deposition of organic compounds like tannins and resins in the central layers of stem
- (c) deposition of suberin and aromatic substances in the outer layer of stem
- (d) deposition of tannins, gum, resin and aromatic substances in the peripheral layers of stem
- (e) presence of parenchyma cells, functionally active xylem elements and essential oils.

Choose the correct answer from the options given below :

- (1) (c) and (d) Only
- (2) (d) and (e) Only
- (3) (b) and (d) Only
- (4) (a) and (b) Only

109. What is the net gain of ATP when each molecule of glucose is converted to two molecules of pyruvic acid ?

- (1) Six
- (2) Two
- (3) Eight
- (4) Four

110. Which one of the following never occurs during mitotic cell division ?

- (1) Movement of centrioles towards opposite poles
- (2) Pairing of homologous chromosomes
- (3) Coiling and condensation of the chromatids
- (4) Spindle fibres attach to kinetochores of chromosomes

111. Production of Cucumber has increased manifold in recent years. Application of which of the following phytohormones has resulted in this increased yield as the hormone is known to produce female flowers in the plants :

- (1) Gibberellin
- (2) Ethylene
- (3) Cytokinin
- (4) ABA

112. Match List - I with List - II.

- | List - I | | List - II |
|---------------|-------|-------------------------------------------------------|
| (a) Manganese | (i) | Activates the enzyme catalase |
| (b) Magnesium | (ii) | Required for pollen germination |
| (c) Boron | (iii) | Activates enzymes of respiration |
| (d) Iron | (iv) | Functions in splitting of water during photosynthesis |

Choose the correct answer from the options given below :

- (1) (a) - (iv), (b) - (iii), (c) - (ii), (d) - (i)
- (2) (a) - (iv), (b) - (i), (c) - (ii), (d) - (iii)
- (3) (a) - (iii), (b) - (i), (c) - (ii), (d) - (iv)
- (4) (a) - (iii), (b) - (iv), (c) - (i), (d) - (ii)

113. The flowers are Zygomorphic in :

- (a) Mustard
- (b) Gulmohar
- (c) Cassia
- (d) Datura
- (e) Chilly

Choose the correct answer from the options given below :

- (1) (b), (c) Only
- (2) (d), (e) Only
- (3) (c), (d), (e) Only
- (4) (a), (b), (c) Only

114. Which of the following is incorrectly matched ?

- (1) Ulothrix - Mannitol
- (2) Porphyra - Floridian Starch
- (3) Volvox - Starch
- (4) Ectocarpus - Fucoxanthin

115. Given below are two statements :-

Statement I :

Decomposition is a process in which the detritus is degraded into simpler substances by microbes.

Statement II :

Decomposition is faster if the detritus is rich in lignin and chitin

In the light of the above statements, choose the correct answer from the options given below :

- (1) Both Statement I and Statement II are incorrect
- (2) Statement I is correct but Statement II is incorrect
- (3) Statement I is incorrect but Statement II is correct
- (4) Both Statement I and Statement II are correct

Get upto 100% SCHOLARSHIP on the basis of NEET 2022

NEET Score	FEE After Scholarship
600+	10,000 (Kit Cost)
571-600	22,881
551-570	34,322
531-550	40,042
511-530	45,762

T3

16

116. The appearance of recombination nodules on homologous chromosomes during meiosis characterizes :
- (1) Bivalent
 - (2) Sites at which crossing over occurs
 - (3) Terminalization
 - (4) Synaptonemal complex
117. Which one of the following plants does not show plasticity ?
- (1) Coriander
 - (2) Buttercup
 - (3) Maize
 - (4) Cotton
118. Read the following statements and choose the set of correct statements :
- (a) Euchromatin is loosely packed chromatin
 - (b) Heterochromatin is transcriptionally active
 - (c) Histone octamer is wrapped by negatively charged DNA in nucleosome
 - (d) Histones are rich in lysine and arginine
 - (e) A typical nucleosome contains 400 bp of DNA helix
- Choose the correct answer from the options given below :
- (1) (a), (c), (d) Only
 - (2) (b), (e) Only
 - (3) (a), (c), (e) Only
 - (4) (b), (d), (e) Only
119. The device which can remove particulate matter present in the exhaust from a thermal power plant is :
- (1) Incinerator
 - (2) Electrostatic Precipitator
 - (3) Catalytic Converter
 - (4) STP
120. The process of translation of mRNA to proteins begins as soon as :
- (1) The larger subunit of ribosome encounters mRNA
 - (2) Both the subunits join together to bind with mRNA
 - (3) The tRNA is activated and the larger subunit of ribosome encounters mRNA
 - (4) The small subunit of ribosome encounters mRNA

121. Identify the incorrect statement related to Pollination :

- (1) Pollination by wind is more common amongst abiotic pollination
- (2) Flowers produce foul odours to attract flies and beetles to get pollinated
- (3) Moths and butterflies are the most dominant pollinating agents among insects
- (4) Pollination by water is quite rare in flowering plants

122. The gaseous plant growth regulator is used in plants to :

- (1) promote root growth and root hair formation to increase the absorption surface
- (2) help overcome apical dominance
- (3) kill dicotyledonous weeds in the fields
- (4) speed up the malting process

123. Which one of the following produces nitrogen fixing nodules on the roots of *Alnus* ?

- (1) Frankia
- (2) *Rhodospirillum*
- (3) *Beijerinckia*
- (4) *Rhizobium*

124. What amount of energy is released from glucose during lactic acid fermentation ?

- (1) More than 18%
- (2) About 10%
- (3) Less than 7%
- (4) Approximately 15%

125. Habitat loss and fragmentation, over exploitation, alien species invasion and co-extinction are causes for :

- (1) Competition
- (2) Biodiversity loss
- (3) Natality
- (4) Population explosion

Get upto 100% SCHOLARSHIP
on the basis of NEET 2022

NEET Score	FEE After Scholarship
491-510	51,483
471-490	57,203
451-470	62,923
431-450	68,644
361-430	80,084
Only Qualified	91,525

126. Given below are two statements : one is labelled as Assertion (A) and the other is labelled as Reason (R).

Assertion (A):
Polymerase chain reaction is used in DNA amplification

Reason (R):
The ampicillin resistant gene is used as a selectable marker to check transformation

In the light of the above statements, choose the correct answer from the options given below :

(1) Both (A) and (R) are correct but (R) is not the correct explanation of (A)

(2) (A) is correct but (R) is not correct

(3) (A) is not correct but (R) is correct

(4) Both (A) and (R) are correct and (R) is the correct explanation of (A)

127. Identify the correct set of statements :

(a) The leaflets are modified into pointed hard thorns in *Citrus* and *Bougainvillea*

(b) Axillary buds form slender and spirally coiled tendrils in cucumber and pumpkin

(c) Stem is flattened and fleshy in *Opuntia* and modified to perform the function of leaves

(d) *Rhizophora* shows vertically upward growing roots that help to get oxygen for respiration

(e) Subaerially growing stems in grasses and strawberry help in vegetative propagation

Choose the correct answer from the options given below :

(1) (a) and (d) Only

(2) (b), (c), (d) and (e) Only

(3) (a), (b), (d) and (e) Only

(4) (b) and (c) Only

128. "Girdling Experiment" was performed by Plant Physiologists to identify the plant tissue through which :

(1) food is transported

(2) for both water and food transportation

(3) osmosis is observed

(4) water is transported

129. Which one of the following statement is not true regarding gel electrophoresis technique ?

(1) The separated DNA fragments are stained by using ethidium bromide.

(2) The presence of chromogenic substrate gives blue coloured DNA bands on the gel.

(3) Bright orange coloured bands of DNA can be observed in the gel when exposed to UV light.

(4) The process of extraction of separated DNA strands from gel is called elution.

130. XO type of sex determination can be found in :

(1) Birds

(2) Grasshoppers

(3) Monkeys

(4) *Drosophila*

131. Exoskeleton of arthropods is composed of :

(1) Cellulose

(2) Chitin

(3) Glucosamine

(4) Cutin

132. Hydrocolloid carrageen is obtained from :

(1) Phaeophyceae and Rhodophyceae

(2) Rhodophyceae only

(3) Phaeophyceae only

(4) Chlorophyceae and Phaeophyceae

133. Which one of the following is not true regarding the release of energy during ATP synthesis through chemiosmosis ? It involves :

(1) Breakdown of electron gradient

(2) Movement of protons across the membrane to the stroma

(3) Reduction of NADP to NADPH₂ on the stroma side of the membrane

(4) Breakdown of proton gradient

134. Which of the following is not observed during apoplastic pathway ?

(1) The movement does not involve crossing of cell membrane

(2) The movement is aided by cytoplasmic streaming

(3) Apoplast is continuous and does not provide any barrier to water movement.

(4) Movement of water occurs through intercellular spaces and wall of the cells.

Get upto 100% SCHOLARSHIP on the basis of NEET 2022

NEET Score	FEE After Scholarship
600+	10,000 (Kit Cost)
571-600	22,881
551-570	34,322
531-550	40,042
511-530	45,762

NEET ACHIEVER BATCH
For Class 12th & 12th Pass Students

New Batch Starting from :
20th & 27th July 2022

T3

135. Which one of the following plants shows vexillary aestivation and diadelphous stamens?

- (1) *Pisum sativum*
 (2) *Allium cepa*
 (3) *Solanum nigrum*
 (4) *Colchicum autumnale*

Section - B (Biology : Botany)

136. Transposons can be used during which one of the following?

- (1) Gene silencing
 (2) ~~Autoradiography~~
 (3) ~~Gene sequencing~~
 (4) Polymerase Chain Reaction

137. Which of the following occurs due to the presence of autosome linked dominant trait?

- (1) Myotonic dystrophy
 (2) Haemophilia
 (3) Thalessemia
 (4) Sickle cell anaemia

138. While explaining interspecific interaction of population, (+) sign is assigned for beneficial interaction, (-) sign is assigned for detrimental interaction and (0) for neutral interaction. Which of the following interactions can be assigned (+) for one species and (-) for another species involved in the interaction?

- (1) Amensalism
 (2) Commensalism
 (3) Competition
 (4) Predation

139. In the following palindromic base sequences of DNA, which one can be cut easily by particular restriction enzyme?

- (1) 5' GAATTC3' ; 3' CTTAAG5'
 (2) ~~5' CTCAGT3' ; 3' GAGTCA5'~~
 (3) ~~5' GATATTC3' ; 3' CATAAG5'~~
 (4) 5' GATACT3' ; 3' CTATGA5'

140. The entire fleet of buses in Delhi were converted to CNG from diesel. In reference to this, which one of the following statements is false?

- (1) The same diesel engine is used in CNG buses making the cost of conversion low
 (2) ~~It is cheaper than diesel~~
 (3) ~~It can not be adulterated like diesel~~
 (4) ~~CNG burns more efficiently than diesel~~

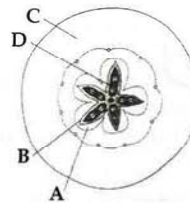
141. If a geneticist uses the blind approach for sequencing the whole genome of an organism, followed by assignment of function to different segments, the methodology adopted by him is called as:

- (1) Gene mapping
 (2) Expressed sequence tags
 (3) Bioinformatics
 (4) Sequence annotation

142. Addition of more solutes in a given solution will:

- (1) lower its water potential
 (2) make its water potential zero
 (3) not affect the water potential at all
 (4) raise its water potential

143. Which part of the fruit, labelled in the given figure makes it a false fruit?



- (1) B → Endocarp
 (2) C → Thalamus
 (3) D → Seed
 (4) A → Mesocarp

144. Given below are two statements: one is labelled as Assertion (A) and the other is labelled as Reason (R).

Assertion (A):

Mendel's law of Independent assortment does not hold good for the genes that are located closely on the same chromosome.

Reason (R):

Closely located genes assort independently.

In the light of the above statements, choose the correct answer from the options given below:

- (1) Both (A) and (R) are correct but (R) is not the correct explanation of (A)
 (2) (A) is correct but (R) is not correct
 (3) (A) is not correct but (R) is correct
 (4) Both (A) and (R) are correct and (R) is the correct explanation of (A)

Get upto 100% SCHOLARSHIP
on the basis of NEET 2022

NEET Score	FEE After Scholarship
491-510	51,483
471-490	57,203
451-470	62,923
431-450	68,644
361-430	80,084
Only Qualified	91,525

19

T3

145. Read the following statements on lipids and find out correct set of statements :

- (a) Lecithin found in the plasma membrane is a glycolipid
- (b) Saturated fatty acids possess one or more C=C bonds
- (c) Gingly oil has lower melting point, hence remains as oil in winter
- (d) Lipids are generally insoluble in water but soluble in some organic solvents
- (e) When fatty acid is esterified with glycerol, monoglycerides are formed

Choose the correct answer from the options given below :

- (1) (a), (d) and (e) only
- (2) (c), (d) and (e) only
- (3) (a), (b) and (d) only
- (4) (a), (b) and (c) only

146. What is the role of large bundle sheath cells found around the vascular bundles in C_4 plants ?

- (1) To increase the number of chloroplast for the operation of Calvin cycle
- (2) To enable the plant to tolerate high temperature
- (3) To protect the vascular tissue from high light intensity
- (4) To provide the site for photorespiratory pathway

147. Match the plant with the kind of life cycle it exhibits :

- | List - I | List - II |
|----------------------|-------------------------------------------------------------------------------------------------------|
| (a) <u>Spirogyra</u> | (i) Dominant diploid sporophyte vascular plant, with highly reduced male or female gametophyte |
| (b) <u>Fern</u> | (ii) Dominant haploid free-living gametophyte |
| (c) <u>Funaria</u> | (iii) Dominant diploid sporophyte alternating with reduced gametophyte called prothallus |
| (d) <u>Cycas</u> | (iv) Dominant haploid leafy gametophyte alternating with partially dependent multicellular sporophyte |

Choose the correct answer from the options given below :

- (1) (a) - (ii), (b) - (iii), (c) - (iv), (d) - (i)
- (2) (a) - (iii), (b) - (iv), (c) - (i), (d) - (ii)
- (3) (a) - (ii), (b) - (iv), (c) - (i), (d) - (iii)
- (4) (a) - (iv), (b) - (i), (c) - (ii), (d) - (iii)

148. Which one of the following will accelerate phosphorus cycle ?

- (1) Volcanic activity
- (2) Weathering of rocks
- (3) Rain fall and storms
- (4) Burning of fossil fuels

149. The anatomy of springwood shows some peculiar features. Identify the correct set of statements about springwood.

- (a) It is also called as the earlywood
- (b) In spring season cambium produces xylem elements with narrow vessels
- (c) It is lighter in colour
- (d) The springwood along with autumnwood shows alternate concentric rings forming annual rings
- (e) It has lower density

Choose the correct answer from the options given below :

- (1) (a), (c), (d) and (e) Only
- (2) (a), (b) and (d) Only
- (3) (c), (d) and (e) Only
- (4) (a), (b), (d) and (e) Only

150. Match List - I with List - II.

- | List - I | List - II |
|-----------------------------------|---------------------------------------------------------------------------------------------|
| (a) <u>Metacentric chromosome</u> | (i) Centromere situated close to the end forming one extremely short and one very long arms |
| (b) <u>Acrocentric chromosome</u> | (ii) Centromere at the terminal end |
| (c) <u>Sub-metacentric</u> | (iii) Centromere in the middle forming two equal arms of chromosomes |
| (d) <u>Telocentric chromosome</u> | (iv) Centromere slightly away from the middle forming one shorter arm and one longer arm |

Choose the correct answer from the options given below :

- (1) (a) - (i), (b) - (iii), (c) - (ii), (d) - (iv)
- (2) (a) - (ii), (b) - (iii), (c) - (iv), (d) - (i)
- (3) (a) - (i), (b) - (ii), (c) - (iii), (d) - (iv)
- (4) (a) - (iii), (b) - (i), (c) - (iv), (d) - (ii)

Get upto 100% SCHOLARSHIP
on the basis of NEET 2022

NEET Score	FEE After Scholarship
600+	10,000 (Kit Cost)
571-600	22,881
551-570	34,322
531-550	40,042
511-530	45,762

NEET ACHIEVER BATCH
For Class 12th & 12th Pass Students

New Batch Starting from :
20th & 27th July 2022

T3

Section - A (Biology : Zoology)

151. In gene therapy of Adenosine Deaminase (ADA) deficiency, the patient requires periodic infusion of genetically engineered lymphocytes because :

- (1) Gene isolated from marrow cells producing ADA is introduced into cells at embryonic stages
- (2) Lymphocytes from patient's blood are grown in culture, outside the body.
- (3) Genetically engineered lymphocytes are not immortal cells.
- (4) Retroviral vector is introduced into these lymphocytes.

152. In-situ conservation refers to :

- (1) Conserve only high risk species
- (2) Conserve only endangered species
- (3) Conserve only extinct species
- (4) Protect and conserve the whole ecosystem

153. Given below are two statements : one is labelled as Assertion (A) and the other is labelled as Reason (R).

Assertion (A) :

Osteoporosis is characterised by decreased bone mass and increased chances of fractures.

Reason (R) :

Common cause of osteoporosis is increased levels of estrogen.

In the light of the above statements, choose the most appropriate answer from the options given below :

- (1) Both (A) and (R) are correct but (R) is not the correct explanation of (A)
- (2) (A) is correct but (R) is not correct
- (3) (A) is not correct but (R) is correct
- (4) Both (A) and (R) are correct and (R) is the correct explanation of (A)

154. Which of the following is a correct match for disease and its symptoms ?

- (1) Tetany - high Ca^{2+} level causing rapid spasms.
- (2) Myasthenia gravis - Genetic disorder resulting in weakening and paralysis of skeletal muscle
- (3) Muscular dystrophy - An auto immune disorder causing progressive degeneration of skeletal muscle
- (4) Arthritis - Inflamed joints

20

155. In the taxonomic categories which hierarchical arrangement in ascending order is correct in case of animals ?

- (1) Kingdom, Class, Phylum, Family, Order, Genus, Species
- (2) Kingdom, Order, Class, Phylum, Family, Genus, Species
- (3) Kingdom, Order, Phylum, Class, Family, Genus, Species
- (4) Kingdom, Phylum, Class, Order, Family, Genus, Species

156. Regarding Meiosis, which of the statements is incorrect ?

- (1) DNA replication occurs in S phase of Meiosis-II
- (2) Pairing of homologous chromosomes and recombination occurs in Meiosis-I
- (3) Four haploid cells are formed at the end of Meiosis-II
- (4) There are two stages in Meiosis, Meiosis-I and II

157. If the length of a DNA molecule is 1.1 metres, what will be the approximate number of base pairs ?

- (1) 6.6×10^9 bp
- (2) 3.3×10^6 bp
- (3) 6.6×10^6 bp
- (4) 3.3×10^9 bp

$$1.1 \times 6.6 \times 10^9$$

$$6.6 \times 10^9$$

$$\frac{6.6}{2} = 3.3$$

$$3.3 \times 10^9$$

158. Given below are two statements :

Statement I :

The coagulum is formed of network of threads called thrombins

Statement II :

Spleen is the graveyard of erythrocytes.

In the light of the above statements, choose the most appropriate answer from the options given below :

- (1) Both Statement I and Statement II are incorrect
- (2) Statement I is correct but Statement II is incorrect
- (3) Statement I is incorrect but Statement II is correct
- (4) Both Statement I and Statement II are correct

Get upto 100% SCHOLARSHIP on the basis of NEET 2022

NEET Score	FEE After Scholarship
491-510	51,483
471-490	57,203
451-470	62,923
431-450	68,644
351-430	80,084
Only Qualified	91,525

21

T3

159. Given below are two statements :

Statement I :

Mycoplasma can pass through less than 1 micron filter size.

Statement II :

Mycoplasma are bacteria with cell wall

In the light of the above statements, choose the most appropriate answer from the options given below :

- (1) Both Statement I and Statement II are incorrect
- (2) Statement I is correct but Statement II is incorrect
- (3) Statement I is incorrect but Statement II is correct
- (4) Both Statement I and Statement II are correct

160. If '8' *Drosophila* in a laboratory population of '80' died during a week, the death rate in the population is _____ individuals per *Drosophila* per week.

- (1) 10
- (2) 1.0
- (3) zero
- (4) 0.1

161. A dehydration reaction links two glucose molecules to produce maltose. If the formula for glucose is $C_6H_{12}O_6$ then what is the formula for maltose?

- (1) $C_{12}H_{24}O_{12}$
- (2) $C_{12}H_{22}O_{11}$
- (3) $C_{12}H_{24}O_{11}$
- (4) $C_{12}H_{20}O_{10}$

162. Tegmina in cockroach, arises from :

- (1) Mesothorax
- (2) Metathorax
- (3) Prothorax and Mesothorax
- (4) Prothorax

163. Identify the microorganism which is responsible for the production of an immunosuppressive molecule cyclosporin A :

- (1) *Clostridium butylicum*
- (2) *Aspergillus niger*
- (3) *Streptococcus cerevisiae*
- (4) *Trichoderma polysporum*

164. Nitrogenous waste is excreted in the form of pellet or paste by :

- (1) *Salamandra*
- (2) *Hippocampus*
- (3) *Pavo*
- (4) *Ornithorhynchus*

165. Which of the following functions is not performed by secretions from salivary glands ?

- (1) Digestion of complex carbohydrates
- (2) Lubrication of oral cavity
- (3) Digestion of disaccharides
- (4) Control bacterial population in mouth

166. Breeding crops with higher levels of vitamins and minerals or higher proteins and healthier fats is called :

- (1) Bio-remediation
- (2) Bio-fortification
- (3) Bio-accumulation
- (4) Bio-magnification

167. Which of the following is not the function of conducting part of respiratory system ?

- (1) Inhaled air is humidified
- (2) Temperature of inhaled air is brought to body temperature
- (3) Provides surface for diffusion of O_2 and CO_2
- (4) It clears inhaled air from foreign particles

168. Natural selection where more individuals acquire specific character value other than the mean character value, leads to :

- (1) Directional change
- (2) Disruptive change
- (3) Random change
- (4) Stabilising change

169. Which of the following statements with respect to Endoplasmic Reticulum is incorrect ?

- (1) SER is devoid of ribosomes
- (2) In prokaryotes only RER are present
- (3) SER are the sites for lipid synthesis
- (4) RER has ribosomes attached to ER

Get upto 100% SCHOLARSHIP on the basis of NEET 2022

NEET Score	FEE After Scholarship
600+	10,000 (Kit Cost)
571-600	22,881
551-570	34,322
531-550	40,042
511-530	45,762

NEET ACHIEVER BATCH
For Class 12th & 12th Pass Students

New Batch Starting from :
20th & 27th July 2022

T3

170. Given below are two statements :

Statement I :

~~Autoimmune disorder is a condition where body defense mechanism recognizes its own cells as foreign bodies.~~

Statement II :

~~Rheumatoid arthritis is a condition where body does not attack self cells.~~

In the light of the above statements, choose the most appropriate answer from the options given below :

- (1) Both Statement I and Statement II are incorrect
- (2) Statement I is correct but Statement II is incorrect
- (3) Statement I is incorrect but Statement II is correct
- (4) Both Statement I and Statement II are correct

171. Under normal physiological conditions in human being every 100 ml of oxygenated blood can deliver ml of O₂ to the tissues.

- (1) 5 ml
- (2) 4 ml
- (3) 10 ml
- (4) 2 ml

172. In an *E. coli* strain *i* gene gets mutated and its product can not bind the inducer molecule. If growth medium is provided with lactose, what will be the outcome ?

- (1) *z, y, a* genes will be transcribed
- (2) *z, y, a* genes will not be translated
- (3) RNA polymerase will bind the promoter region
- (4) Only *z* gene will get transcribed

173. Which of the following is present between the adjacent bones of the vertebral column ?

- (1) Cartilage
- (2) Areolar tissue
- (3) Smooth muscle
- (4) Intercalated discs

22

174. Given below are two statements : one is labelled as Assertion (A) and the other is labelled as Reason (R).

Assertion (A) :

All vertebrates are chordates but all chordates are not vertebrates.

Reason (R) :

Notochord is replaced by vertebral column in the adult vertebrates.

In the light of the above statements, choose the most appropriate answer from the options given below :

- (1) Both (A) and (R) are correct but (R) is not the correct explanation of (A)
- (2) (A) is correct but (R) is not correct
- (3) (A) is not correct but (R) is correct
- (4) Both (A) and (R) are correct and (R) is the correct explanation of (A)

175. Given below are two statements :

Statement I :

The release of sperms into the seminiferous tubules is called spermiation.

Statement II :

Spermiogenesis is the process of formation of sperms from spermatogonia.

In the light of the above statements, choose the most appropriate answer from the options given below :

- (1) Both Statement I and Statement II are incorrect
- (2) Statement I is correct but Statement II is incorrect
- (3) Statement I is incorrect but Statement II is correct
- (4) Both Statement I and Statement II are correct

176. Identify the asexual reproductive structure associated with *Penicillium* :

- (1) Conidia
- (2) Gemmules
- (3) Buds
- (4) Zoospores

Get upto 100% SCHOLARSHIP
on the basis of NEET 2022

NEET Score	FEE After Scholarship
491-510	51,483
471-490	57,203
451-470	62,923
431-450	68,644
361-430	80,084
Only Qualified	91,525

23

T3

177. Which of the following statements are true for spermatogenesis but do not hold true for Oogenesis?
- It results in the formation of haploid gametes
 - Differentiation of gamete occurs after the completion of meiosis
 - Meiosis occurs continuously in a mitotically dividing stem cell population
 - It is controlled by the Luteinising hormone (LH) and Follicle Stimulating Hormone (FSH) secreted by the anterior pituitary
 - It is initiated at puberty
- Choose the most appropriate answer from the options given below:
- (b) and (c) only
 - (b), (d) and (e) only
 - (b), (c) and (e) only
 - (c) and (e) only
178. Given below are two statements:
- Statement I:**
Restriction endonucleases recognise specific sequence to cut DNA known as palindromic nucleotide sequence.
- Statement II:**
Restriction endonucleases cut the DNA strand a little away from the centre of the palindromic site.
- In the light of the above statements, choose the most appropriate answer from the options given below:
- Both Statement I and Statement II are incorrect
 - Statement I is correct but Statement II is incorrect
 - Statement I is incorrect but Statement II is correct
 - Both Statement I and Statement II are correct
179. Lippe's loop is a type of contraceptive used as:
- Vault barrier
 - Non-Medicated IUD
 - Copper releasing IUD
 - Cervical barrier
180. Detritivores breakdown detritus into smaller particles. This process is called:
- Fragmentation
 - Humification
 - Decomposition
 - Catabolism

181. Which of the following is not a connective tissue?
- Adipose tissue
 - Cartilage
 - Neuroglia
 - Blood
182. In which of the following animals, digestive tract has additional chambers like crop and gizzard?
- Bufo, Balaenoptera, Bangarus
 - Catla, Columba, Crocodilus
 - Pavo, Psittacula, Corvus
 - Corvus, Columba, Chameleon
183. Given below are two statements:
- Statement I:**
Fatty acids and glycerols cannot be absorbed into the blood.
- Statement II:**
Specialized lymphatic capillaries called lacteals carry chylomicrons into lymphatic vessels and ultimately into the blood.
- In the light of the above statements, choose the most appropriate answer from the options given below:
- Both Statement I and Statement II are incorrect
 - Statement I is correct but Statement II is incorrect
 - Statement I is incorrect but Statement II is correct
 - Both Statement I and Statement II are correct
184. Select the incorrect statement with reference to mitosis:
- Spindle fibres attach to centromere of chromosomes.
 - Chromosomes decondense at telophase.
 - Splitting of centromere occurs at anaphase.
 - All the chromosomes lie at the equator at metaphase.
185. At which stage of life the oogenesis process is initiated?
- Embryonic development stage
 - Birth
 - Adult
 - Puberty

Get upto 100% SCHOLARSHIP
on the basis of NEET 2022

NEET Score	FEE After Scholarship
600+	10,000 (Kit Cost)
571-600	22,881
551-570	34,322
531-550	40,042
511-530	45,762

NEET ACHIEVER BATCH
For Class 12th & 12th Pass Students

New Batch Starting from :
20th & 27th July 2022

T3

Section - B (Biology : Zoology)

186. The recombination frequency between the genes a & c is 5%, b & c is 15%, b & d is 9%, a & b is 20%, c & d is 24% and a & d is 29%. What will be the sequence of these genes on a linear chromosome ?
- (1) d, b, a, c
(2) a, b, c, d
(3) a, c, b, d
(4) a, d, b, c



187. Which one of the following statements is correct ?

- (1) The tricuspid and the bicuspid valves open due to the pressure exerted by the simultaneous contraction of the atria
(2) Blood moves freely from atrium to the ventricle during joint diastole.
(3) Increased ventricular pressure causes closing of the semilunar valves.
(4) The atrio-ventricular node (AVN) generates an action potential to stimulate atrial contraction

188. Given below are two statements :

Statement I :

In a scrubber the exhaust from the thermal plant is passed through the electric wires to charge the dust particles.

Statement II :

Particulate matter (PM 2.5) can not be removed by scrubber but can be removed by an electrostatic precipitator.

In the light of the above statements, choose the most appropriate answer from the options given below :

- (1) Both Statement I and Statement II are incorrect
(2) Statement I is correct but Statement II is incorrect
(3) Statement I is incorrect but Statement II is correct
(4) Both Statement I and Statement II are correct

189. Match List - I with List - II.

- | List - I | List - II |
|--------------------|-------------------------------------|
| (a) Bronchioles | (i) Dense Regular Connective Tissue |
| (b) Goblet cell | (ii) Loose Connective Tissue |
| (c) Tendons | (iii) Glandular Tissue |
| (d) Adipose Tissue | (iv) Ciliated Epithelium |

Choose the correct answer from the options given below :

- (1) (a) - (i), (b) - (ii), (c) - (iii), (d) - (iv)
(2) (a) - (ii), (b) - (i), (c) - (iv), (d) - (iii)
(3) (a) - (iii), (b) - (iv), (c) - (ii), (d) - (i)
(4) (a) - (iv), (b) - (iii), (c) - (i), (d) - (ii)

24

190. Ten *E. coli* cells with ¹⁵N - dsDNA are incubated in medium containing ¹⁴N nucleotide. After 60 minutes, how many *E. coli* cells will have DNA totally free from ¹⁵N ?

- (1) 40 cells
(2) 60 cells
(3) 80 cells
(4) 20 cells

191. Select the incorrect statement regarding synapses :

- (1) Electrical current can flow directly from one neuron into the other across the electrical synapse.
(2) Chemical synapses use neurotransmitters
(3) Impulse transmission across a chemical synapse is always faster than that across an electrical synapse.
(4) The membranes of presynaptic and postsynaptic neurons are in close proximity in an electrical synapse.

192. Which of the following are not the effects of Parathyroid hormone ?

- (a) Stimulates the process of bone resorption
(b) Decreases Ca²⁺ level in blood
(c) Reabsorption of Ca²⁺ by renal tubules
(d) Decreases the absorption of Ca²⁺ from digested food
(e) Increases metabolism of carbohydrates

Choose the most appropriate answer from the options given below :

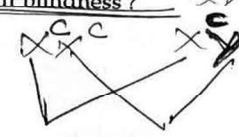
- (1) (b), (d) and (e) only
(2) (a) and (e) only
(3) (b) and (c) only
(4) (a) and (c) only

193. Which of the following statements is not true ?

- (1) Sweet potato and potato is an example of analogy
(2) Homology indicates common ancestry
(3) Flippers of penguins and dolphins are a pair of homologous organs
(4) Analogous structures are a result of convergent evolution

194. If a colour blind female marries a man whose mother was also colour blind, what are the chances of her progeny having colour blindness ?

- (1) 50%
(2) 75%
(3) 100%
(4) 25%



Get upto 100% SCHOLARSHIP
on the basis of NEET 2022

NEET Score	FEE After Scholarship
491-510	51,483
471-490	57,203
451-470	62,923
431-450	68,644
351-430	80,084
Only Qualified	91,525

195. Which of the following is a correct statement?

- (1) Bacteria are exclusively heterotrophic organisms.
- (2) Slime moulds are saprophytic organisms classified under Kingdom Monera.
- (3) Mycoplasma have DNA, Ribosome and cell wall
- (4) Cyanobacteria are a group of autotrophic organisms classified under Kingdom Monera.

196. Match List - I with List - II.

List - I (Biological Molecules)	List - II (Biological functions)
(a) Glycogen	(i) Hormone
(b) Globulin	(ii) Biocatalyst
(c) Steroids	(iii) Antibody
(d) Thrombin	(iv) Storage product

Choose the correct answer from the options given below:

- (1) (a) - (iv), (b) - (ii), (c) - (i), (d) - (iii)
- (2) (a) - (ii), (b) - (iv), (c) - (iii), (d) - (i)
- (3) (a) - (iv), (b) - (iii), (c) - (i), (d) - (ii)
- (4) (a) - (iii), (b) - (ii), (c) - (iv), (d) - (i)

197. Which of the following is not a desirable feature of a cloning vector?

- (1) Presence of a marker gene
- (2) Presence of single restriction enzyme site
- (3) Presence of two or more recognition sites
- (4) Presence of origin of replication

198. Match List - I with List - II with respect to methods of Contraception and their respective actions.

List - I	List - II
(a) Diaphragms	(i) Inhibit ovulation and Implantation
(b) Contraceptive Pills	(ii) Increase phagocytosis of sperm within Uterus
(c) Intra Uterine Devices	(iii) Absence of Menstrual cycle and ovulation following parturition
(d) Lactational Amenorrhea	(iv) They cover the cervix blocking the entry of sperms

Choose the correct answer from the options given below:

- (1) (a) - (iv), (b) - (i), (c) - (ii), (d) - (iii)
- (2) (a) - (ii), (b) - (iv), (c) - (i), (d) - (iii)
- (3) (a) - (iii), (b) - (ii), (c) - (i), (d) - (iv)
- (4) (a) - (iv), (b) - (i), (c) - (iii), (d) - (ii)

199. Statements related to human Insulin are given below. Which statement(s) is/are correct about genetically engineered Insulin?

- (a) Pro-hormone insulin contain extra stretch of C-peptide
- (b) A-peptide and B-peptide chains of insulin were produced separately in *E.coli*, extracted and combined by creating disulphide bond between them.
- (c) Insulin used for treating Diabetes was extracted from Cattles and Pigs.
- (d) Pro-hormone Insulin needs to be processed for converting into a mature and functional hormone.
- (e) Some patients develop allergic reactions to the foreign insulin.

Choose the most appropriate answer from the options given below:

- (1) (b) only
- (2) (c) and (d) only
- (3) (c), (d) and (e) only
- (4) (a), (b) and (d) only

200. Select the incorrect statement with respect to acquired immunity.

- (1) Anamnestic response is elicited on subsequent encounters with the same pathogen.
- (2) Anamnestic response is due to memory of first encounter.
- (3) Acquired immunity is non-specific type of defense present at the time of birth.
- (4) Primary response is produced when our body encounters a pathogen for the first time.

- o o o -

Get upto 100% SCHOLARSHIP
on the basis of NEET 2022

NEET Score	FEE After Scholarship
600+	10,000 (Kit Cost)
571-600	22,881
551-570	34,322
531-550	40,042
511-530	45,762

शिक्षक का सेमिनार, ऐसी भीड़ पहली बार

पटना में ऐतिहासिक रहा एनवी सर का मेगा करियर काउंसलिंग शिविर



वे न नेता हैं और न ही अभिनेता लेकिन लोकप्रियता गजब नजर आ रही थी। साढ़े पांच हजार लोगों की श्रमता वाला पटना का वापू समागार खचाखच भरा था। जी हाँ, हम बात कर रहे हैं शिक्षक और मोशन एजुकेशन के फाउंडर, सीईओ एनवी सर के मेगा करियर काउंसलिंग व मोटिवेशनल शिविर की।

पटना के गांधी मैदान के बापू समागार का। सेमिनार में भाग लेने वाले स्थानीय जानकारों का कहना था कि पटना में अपनी तरह का यह पहला आयोजन था। विद्यार्थियों को संबोधित करते हुए नितिन विजय ने कहा कि मुझे पढ़ाना पसन्द था, इसलिए मैंने आईआईटी में पढ़कर भी शिक्षक की भूमिका स्वीकार की। मोशन

एजुकेशन हमारे जोश और जज्बे की कहानी है। इसकी शुरुआत 7 दिसम्बर 2007 को मात्र एक कमरे की फिजिक्स क्लास से हुई थी। तब मेरे पास डिग्री के अलावा केवल परिवार से मिले संस्कार, विद्यार्थियों की मदद का मिशन और निरंतर प्रयास का जज्बा ही था लेकिन आज मोशन लाखों

सेमिनार में पहुंचे विद्यार्थी और अभिभावक बोले

शोशल मीडिया पर एनवी सर के वीडियो देखते थे। उनके पटना आने की खबर से ही हम बहुत उत्साहित थे। उनका एनवी सर का हमारे लिए बहुत बड़ी बात है। 9 अप्रैल की रात को एक्सप्रेसमेंट के कारण होस्टल में हमको नींद नहीं आई। सेमिनार में उनसे रू-रू होकर मन में कुछ कर गुजरने का होसला जागा है और लग रहा है कि ऑल इण्डिया फस्ट रैंक मेरी ही होगी। धन्यवाद एनवी सर।

ऋषभकुमार भगत, सेमिनार के बाद

सेमिनार में आकर अच्छा लगा। सेमिनार में बच्चों की शिक्षा के बारे में बताया है। यहाँ आकर सोचने का मौका मिला कि कैसे पढ़ाना है, आगे बढ़ाना है।

एक अभिभावक, सेमिनार के बाद

जेईई की तैयारी के लिए कोटा जाना चाहता था। पहले थोड़ा नर्वस था अनजान शहर में लाइफ कैसे चलेगी लेकिन एनवी सर को सुनकर मेरा असमंजस दूर हो गया। अब मैं कोटा जाकर कोविंग लूंगा।

सुमित रंजन, सेमिनार के बाद

सच कहूँ, इतना बड़ा सेमिनार और ऐसा प्रेम जीवन में पहली बार मिला है। इसके लिए कृतज्ञ महसूस कर रहा हूँ। एक शिक्षक के नाते इतना प्रेम मिलेगा सोचा भी ना था।

नितिन विजय, (फाउंडर और सीईओ, मोशन एजुकेशन)

परवरिश भावनात्मक जुड़ाव से ही आएगा बच्चों में बदलाव

कोटा
हम अपने बच्चे को जैसा बनाना चाहते हैं, वैसे पहले हम बर्न। मिसाल के लिए यदि कोई काम आपकी पसंद के मुताबिक नहीं होता है तो आप गुस्सा जाहिर करते हैं। मानकर चलें कि बच्चे के मन की नहीं होगी तो वह भी गुस्सा ही करेगा। घर-घर की कहानी है... ज्यादातर अभिभावक परेशान रहते हैं... कहते हैं बच्चे बात नहीं मानते, गुस्सा करते हैं, टीवी, मोबाइल, गेमिंग में लगे रहते हैं, पढ़ते नहीं...वे बच्चों को समझाते, धमकाते और कई बार मारपीट भी करते हैं...पर सुधार नहीं आता... उन्हें तो क्या करें...वे तब नहीं कर पाते, सोचते हैं आखिर कमी कहाँ रहती है...।

दरअसल आप बहुत सफल उद्योगपति, अधिकारी, डॉक्टर, इंजीनियर या कुछ भी हो सकते हैं। लेकिन करियर की सफलता



सुशीला विजय, डायरेक्टर मोशन एजुकेशन
डॉ. स्वाति विजय, ज्यूरिवेक्टर मोशन एजुकेशन

ऐसे आया बदलाव:
बदलाव की प्रक्रिया को हम एक उदाहरण से समझते हैं। कोई खूब गुच्छा खाता है। उसको भी पता है कि इससे कैंसर हो सकता है लेकिन वह फिर भी गुच्छा खाता है। लेकिन एक दिन गुच्छा खाने वाला उसका खास दोस्त कैंसर से चल बसता है। अबनाक उसमें

हम औरजिनल कॉपी है तो बच्चा हमको देखकर सीखता है। वह हमको हम अपने बच्चे को जैसा बनाना चाहते हैं, पहले हम बर्न। बच्चे में बदलाव चाहते हैं तो शुरुआत खुद से करनी होगी। उदाहरण के लिए यदि कोई काम आपकी पसंद के मुताबिक नहीं होता है तो आप गुस्सा जाहिर करते हैं। मानकर चलें कि बच्चे के मन की नहीं होगी तो वह भी गुस्सा ही करेगा।

बच्चों से जुड़ें:
बच्चा आपकी बात सुने और माने इसके लिए आपस में भावनात्मक जुड़ाव जरूरी है। आपका बच्चे से इमोशनल कनेक्शन होगा तो उसके मन में स्वाभाविक प्यार और सम्मान होगा और वह आपकी कक्षा सुनेगा। आप प्यार, यह डिमांड पूरी कर देंगे।

दावा-बादी या दूसरे बड़े बच्चों की मांग पूरी कर देंगे। ऐसे में होता यह है कि घर में बड़े एक दूसरे पर आपस लगाने लगते हैं कि आपकी वजह से बच्चा बिगड़ रहा है। बच्चों का ऐसा बर्ताव बच्चों के जीवन की लय बिगाड़ता है। इसलिए परिवार में तालमेल जरूरी है। यदि रबई-कौन सही है, यह इतना महत्वपूर्ण नहीं है। जरूरी यह है कि बच्चे के लिए क्या सही है।

पढ़ाई को लेकर दबाव नहीं बनाएं:
आप ही क्या कोई अभिभावक पसंद नहीं करेगा कि बच्चा 100 फीसदी नंबर लाए पर उनका सम्मान नहीं करे, उनसे प्यार नहीं करें। आप बच्चे को पढ़ाई में अहमित्तव तो बताएं पर सफलता दबाव नहीं बनाएं। उसे समझाए कि फोकस रहकर पूरी कोशिश करें तो उसके बाद जो भी हासिल

मायबिजकिड : लाइफ स्किल्स सीखकर करें सफलता का आगाज

World's 1st BUSINESS & FINANCE COURSE
For kids of age 8 to 18

कोटा
क्या आप अपने बच्चे को भविष्य में बिजनेस लीडर या इन्वेंटर के रूप में देखते हैं... क्या आपकी लगता है कि वह एक कंपनी शुरू करेगा या अपेक्षाकृत तेजी से कॉर्पोरेट जगत में तरक्की की सोचिएगा... यदि ऐसा है तो व्यवसाय की दुनिया के एडवेंचर की जर्नी शुरू करने के लिए मायबिजकिड आवर्स जरूरी है। मायबिजकिड बच्चों के लिए कोटा का पहला बिजनेस और फाउंडर लॉनिंग वेंच्यूरों में है या कहें कि बच्चों के लिए ऑनलाइन एमबीए जैसा है। 5+ माह के इस पाठ्यक्रम में 16 सप्ताह का लाइव सेशन है। इसमें हम लेकर आए हैं उद्योग जगत के लीडर्स और आईआईटी में एक्सपर्ट्स की व्यावसायिक समझ। इसमें दो तरह के प्रोग्राम हैं-पहला 8 से 11 और दूसरा 12 से 16 साल तक के बच्चों के लिए।

ज्याओ, होमवर्क करो और अच्छे नंबर लो, बाले परंपरागत तरीके से नहीं पढ़ाते। कम्प्यूटेशनल स्किल, लीडरशिप, टीम वर्क, बजट रिस्कल, आत्मविश्वास बनाने, जीवन के लिए व्यावहारिक दृष्टिकोण, निर्णय लेने और समस्या समाधान की कला सिखाते हैं। यह सब उसको स्टेडी टेलिंग, गेम्स, एनिमेशन और मायबिजकिड के जरिए मजेदार तरीके से सिखाते हैं। हम बच्चे को हसंते-खेलते उद्योगिकी की राह पर ले जाते हैं। बेन स्टार्टिंग के जरिए उनको चुनौतियों का सामना करने लायक बनाते हैं। ऐसा माहौल देते हैं जहाँ वे यूनीक बिजनेस आइडिया से संपन्न बिजनेस लीडर की तरह तैयार हो सकें।

बिजनेस आइडिया आजमाने का मौका:
मायबिजकिड के जरिए आपके बच्चे को रीयल टाइम बिजनेस आइडिया को आजमाने का मौका भी मिलता है। इसके तहत उनको

भविष्य की तैयारी आज हो गई तो मिलेगा फायदा

कोटा
हमारा एजुकेशन सिस्टम ऐसा है कि जो सर्वोत्कृष्ट की जानकारी तो देता है लेकिन व्यावहारिक चुनौतियों से कैसे निपटना, इसके बारे में कुछ नहीं बताया जाता। जब आप अच्छे डॉक्टर, इंजीनियर, सीए, विधि विशेषज्ञ जैसे प्रोफेशनल बन जाते हैं तो अगले स्टेप में आप खुद को एक टीम लीडर, फाइनेंस मैनेजर, कम्प्यूटेशनल...की भूमिका में पाते हैं। नई जिम्मेदारियों के मुताबिक आपको इन कई जरूरी लाइफ

लाइफ स्किल्स को अनदेखा करती है हमारी शिक्षा प्रणाली

LET'S TEACH LIFE SKILLS TO KIDS

कोटा
क्या आपकी लगता है कि सिर्फ किताबी ज्ञान से नैतुल कर दुनिया में सफलता हासिल की जा सकती है। नहीं न। दरअसल हमारी शिक्षा प्रणाली विज्ञान, गणित, सामाजिक अध्ययन, लेखाशास्त्र, अर्थशास्त्र जैसे विषय तो पढ़ाती है लेकिन, बहुत ही महत्वपूर्ण चीज लाइफ स्किल्स को अनदेखा किया जाता है।

देश में मात्र एक दशक में कॉलेजों की संख्या में तीन गुना वृद्धि हुई है और वे हर साल लगभग 3.7 करोड़ स्नातक पैदा करते हैं। लेकिन विज्ञान के शिक्षा के स्तर में वृद्धि के साथ ही बेरोजगारी दर में वृद्धि हुई है। तकनीक ने कई कार्यों के ऑटोमेशन को जन्म दिया है। जिससे उपलब्ध नौकरियों की संख्या और कम हो गई है। ऐसे में आज लाखों शिक्षित युवाओं के लिए रोजगार के नए अवसर पैदा करना देश के सामने बड़ी चुनौती है। आज हमें नौकरी चाहने वालों के बजाय नौकरी देने वाले यानी दूरदृष्टि वाले उद्योगियों की जरूरत है क्योंकि सही कौशल और उद्योगीय दृष्टिकोण ही बेरोजगारी की चुनौती का समाधान कर सकता है।

समझने में मदद करेगा कि उद्योगिता क्या है, आपको यह दिखाएगा कि एक उद्यमी बनने के लिए प्रशिक्षित करता है। यह बच्चों को सफल होने के लिए उद्योगीय कौशल और ज्ञान प्रदान करता है। यह कार्यक्रम आपको यह समझने में मदद करेगा कि उद्योगिता क्या है, आपको यह दिखाएगा कि एक उद्यमी बनने के लिए क्या करना पड़ता

NV Sir को बिजनेस वर्ल्ड डिस्कर्ट 40 अंडर 40 Award

शिक्षा के क्षेत्र में उल्लेखनीय कार्य के लिए किया सम्मान

कोटा

मोशन एजुकेशन के फाउंडर और सीईओ नितिन विजय को ज 1 न ी - म 1 न ी बिजनेस वर्ल्ड डिस्कर्ट 40 अंडर 40 से सम्मानित किया गया है। शिक्षा के क्षेत्र में उल्लेखनीय कार्य के लिए उन्हें यह सम्मान दिया गया।

गुरुग्राम के होटल लीला पैलेस में आयोजित समारोह में सम्मान पर प्रतिक्रिया में विजय ने कहा- मैं शिक्षा की काशी कहलाने वाले कोटा से आता हूँ और एक शिक्षक



के रूप में पहचाना जाता हूँ। कभी सोचा नहीं था कि एक उद्यमी के रूप में अवार्ड मिलेगा। उन्होंने अपनी उपलब्धि माता-पिता, पत्नी, मोशन टीम और विद्यार्थियों को समर्पित की। इस मौके पर विजय ने कहा कि हम शिक्षा की गुणवत्ता बढ़ाने और लागत कम करने के मिशन पर कार्य कर रहे हैं। फर्स्टमोडर्न ऑफ एजुकेशन की ओर जा रहे हैं। उन्होंने कहा- हेल्थ केयर के क्षेत्र में जब भी पेशेंट आता है तो उसको बलाना पड़ता कि उसे क्या बीमारी है। दूसरी

ओर हर बच्चा अलग होता है लेकिन बच्चों को एक जैसी ही शिक्षा दी जाती है जबकि उनकी समस्या का समाधान अलग-अलग ही होता है। गौरतलब है कि सम्मान समारोह का आयोजन नई दिल्ली आधारित ज 1 न ी - म 1 न ी बिजनेस वर्ल्ड डिस्कर्ट 40 अंडर 40 से किया गया था। इस पत्रिका का प्रकाशन 1983 में टेलीग्राफ की प्रकाशक आनंद बाजार पत्रिका ने शुरू किया था। अनुराग बत्रा इसके संपादक हैं।



मोशन एजुकेशन के फाउंडर - सीईओ नितिन विजय को बिजनेस वर्ल्ड की ओर से बेस्ट इंटरप्रेन्योर अवार्ड-40 अंडर 40 के समारोह का वीडियो देखने के लिए यह क्यू आर कोड स्कैन करें।



कोटा अब मोशन में है नॉलेज के ऑशन में है...

स्टेशन पर अब ऑटो वाले बैगा कोर्चिस के डायरेक्शन में है, राजीव गांधी नगर हो या जवाहर नगर, सारे होस्टल्स, पीजी भी फुल ऑन टशन में है, क्योंकि कोटा अब मोशन में है।

विद्यार्थियों की चहक और गरमा-गरम कचौड़ियों की महक के साथ पोहे, पेटीज और मोमोस भी फिर से सर्विलेसन में है क्योंकि कोटा अब मोशन में है।

क्लास में फिर बच्चों की खिलखिलाहट सुनकर हर टीचर के चेहरे पर मुस्कान है, स्टूडेंट्स भी अपनी आँखों में

जेईई-नोट ब्रेक करने के सपने लिए क्लासरूम में पढ़ रहे पूरे डिवोशन में है, क्योंकि कोटा अब मोशन में है। अब क्लासरूम से कैफे तक हर जगह है शोर, एनबी सर कोई हंसगुल्ला छोड़े तो जोर से आवाज आती है वन्स मोर, डाउट कार्डर के बाहर स्टूडेंट्स भी अपने हर डाउट को नोट किए इंतजार-ए-सॉल्युशन में है, क्योंकि कोटा अब मोशन में है।

स्टेशनरी पर सिर्फ आरडी शर्मा, एचवी वर्मा सुनाई देता है, हर गली, कॉलोनी में बच्चों का जमावड़ा दिखाई देता है,



Nitin Vijay
(NV Sir)

Amit Verma
(AV Sir)

Dr. Ashish Maheshwari
(AM Sir)

Jitendra Chandwani
(JC Sir)

Ashish Bajpai
(AB Sir)

Lalit Vijay
(LV Sir)

MEET WITH NV SIR & NEET DIRECTORS TEAM

Click Now & Fill Registration Form :

<https://bit.ly/neetwebinarform>

Click Now

नीट में चयनित विद्यार्थी इन कॉलेज में ले सकते है एडमिशन

18 लाख विद्यार्थी दे रहे हैं नीट 2022 की परीक्षा, 612 मेडिकल कॉलेज और 91927 सीट्स के लिए परीक्षा का आयोजन

नीट, मेडिकल जैसे विभिन्न पाठ्यक्रमों में उम्मीदवारों को प्रवेश देने के लिए स्वयं की प्रवेश परीक्षा का संचालन करता है। इस बार NEET 2022 का कट ऑफ प्रतिशत अंको के रूप में जारी किया जाएगा, कट ऑफ परीक्षार्थी के योग माने जाने का मापदंड होता है। परीक्षार्थियों द्वारा प्रवेश परीक्षा में प्राप्त किये गए अंको के आधार पर प्रतिशत अंक की गणना की जाएगी और फिर आगे सामान्य प्रक्रिया लागू होगी। जो परीक्षार्थी NEET 2022 की कट-ऑफ के बराबर या उससे अधिक अंक प्राप्त करेंगे,

केवल उन्हें ही प्रवेश की आगामी प्रक्रियाओं के लिए योग्य घोषित किया जाएगा। परीक्षा उत्तीर्ण करने के बाद, उम्मीदवार योग्य है या नहीं यह जानने के लिए मेरिट प्रतिशत को ध्यान में रखा जाएगा। मेरिट सूची में अधिकारियों द्वारा विशेष श्रेणियों में उपलब्ध सीटों की संख्या से चार गुना ज्यादा परीक्षार्थियों को शामिल किया जाएगा। प्रत्येक श्रेणी में अंतिम परीक्षार्थी द्वारा प्राप्त किया गया प्रतिशत स्कोर NEET 2022 का मेरिट कट ऑफ बन जाएगा।

TOP COLLEGES ON THE BASIS OF AIIMS 2021

Top Government Medical College	Seats	UR Rank	OBC Rank	SC Rank	ST Rank
AIIMS New Delhi	125	53	256	875	4820
AIIMS Jodhpur	125	8855	1242	84045	16903
AIIMS Bhopal	125	572	1235	7905	24629
AIIMS Bibi Nagar Telangana	62	19796	6841	34449	49612
AIIMS Bhubaneswar	125	3719	1306	7136	63824
AIIMS Bathinda	100	8855	3130	84045	48344
AIIMS Mangalagiri	125	4388	6544	27923	46174
AIIMS Rishikesh	125	7027	1836	14388	51247
AIIMS Raipur	125	17941	2146	23342	58873
AIIMS Kalyani	125	12259	6856	49984	66326
AIIMS Patna	125	12041	19793	105598	60121
AIIMS Guwahati	50	5580	20156	43097	81716
AIIMS Bilaspur	50	4142	7191	42343	63142
AIIMS Nagpur	125	18186	3394	21841	45713
AIIMS Guwahati	50	8319	8483	105837	71700
AIIMS Gorakhpur	125	3437	4662	34677	62192
AIIMS Jammu	50	8115	20074	86250	64858
AIIMS Rai Bareilly	100	4572	5080	103776	62084
AIIMS Deoghar	62	6318	19831	104065	124218

JIPMER 2021

JIPMER Puducherry	150	26107	42658	906861	146530
JIPMER Karaikal	50	62036	49453	NA	171972

TOP COLLEGES ON THE BASIS OF NEET (ALL INDIA QUOTA) 2021

Top Government Medical College	UR Rank	OBC Rank	SC Rank	ST Rank
Maulana Azad Medical College, New Delhi	87	372	6966	1438
Stanley Medical College, Chennai	9446	12003	106238	55081
University College of Medical Science, New delhi	2085	830	16798	3319
Lady Hardinge Medical College, Delhi	579	1127	37077	8726
Seth Gordhandas Sunderdas Medical College, Mumbai	773	6783	56313	26577
Grant Medical College, Mumbai	18292	10505	94949	103436
Madras Medical College, Chennai	755	3728	55718	39570
Vardhman Mahavir College, Delhi	143	472	12809	28650
SMS Medical College, Jaipur	731	19765	26396	20366
SN Medical College, Jodhpur	19737	8496	54600	66248
Government Medical College Hospital, Patiala	4492	20651	117465	55398
Lokamanyu Tilak Municipal Medical College, Mumbai	4264	14527	111607	106911
R.G. Kar Medical College and Hospital, Kolkata	1674	3468	76324	11687
Gandhi Medical College, Secunderabad	4014	5997	35330	42201
B. J. Medical College, Ahmedabad	721	2168	124146	9767

**आपकी करोड़ों में एक लाइली को,
NEET Preparation के लिए लाखों की Scholarship**

「 मात्र
₹ 75,000*
प्रतिवर्ष में करें 」

NEET 2023/24 की तैयारी!



- ◆ **Why is there a requirement for a separate girls' NEET batch?**
Comparing the registration ratio of students in the NEET programs, it is discovered that the ratio of girls in the NEET batch is always high. Hence, to maintain the comfort zone of girls and discipline in the batch, Motion Education has divided the NEET batches. There is not only a separate batch for girls and boys but also the batch strength is limited. Through this, students enrolled in the NEET girls batch get the proper attention of their faculties. In addition, this batch is safe and conducted during the even hours so that girls don't face trouble coming to classes.
- ◆ **What are the benefits of joining the NEET girls batch?**
There are many benefits that students can avail themselves of through the classroom course of NEET program. Some of these include:
 - ❖ Get the guidance of Kota's top NEET faculties
 - ❖ Comprehensive study material
 - ❖ Regular doubt support
 - ❖ Exam pattern-based test series (weekly/monthly test)
 - ❖ DPP, PYQs, CPS, and access to Motion Learning App
- ◆ **What will be the teaching medium of the lectures and study material provided to aspirants in the NEET girls batch?**
Motion's priority is to facilitate the best resources and aid to students of both English and Hindi mediums. This is the reason we conduct classes for English as well as Hindi medium students. Study material distributed to students is also based on the choice of medium they opt for during the registration.
- ◆ **Is the fee structure for classes XI, XII and XII passed the same?**
The discounted fee for enrollment in the NEET girls batch is 75,000 INR per year. All the girls enrolling in this NEET program whether they are in class XI, XII or drop year have to only pay 75,000 INR. Also, there will be no extra charges taken for the facilities offered by Motion Education like the study material and unlimited access to Motion Learning App.

◆ मोशन प्रयास के अंतर्गत विद्यार्थियों को क्या-क्या सुविधाएं मिलेंगी?
मोशन प्रयास के अंतर्गत कोचिंग, हॉस्टल, भोजन एवं स्कूल की सुविधा दी जाएगी जिससे परिजन इन सभी आवश्यकताओं की उपलब्धता एवं गुणवत्ता को लेकर निश्चित हो सकें एवं विद्यार्थी अपना सम्पूर्ण ध्यान प्रतियोगी परीक्षा की तैयारी में लगा सकें।

◆ मोशन प्रयास में प्रवेश लेने वाले विद्यार्थियों को पाठ्य सामग्री किस भाषा में प्राप्त होगी?
मोशन प्रयास के अंतर्गत विद्यार्थियों की सुविधानुसार सम्पूर्ण पाठ्य सामग्री (स्टडी मटेरियल), टेस्ट सीरीज, डेली प्रॉब्लम प्रेक्टिस शीट इत्यादि हिंदी माध्यम में उपलब्ध होगी जिससे उन्हें समझने में कोई समस्या ना हो और विद्यार्थी मन लगाकर अध्ययन कर सकें।

◆ क्या हॉस्टल, स्कूल एवं भोजन आदि की फीस मोशन प्रयास की फीस के अतिरिक्त होगी?
मोशन प्रयास में एडमिशन लेने वाले विद्यार्थियों के लिए कोचिंग एवं स्कूल के साथ साथ ही 31 मार्च 2023 तक हॉस्टल एवं भोजन की सभी सुविधाएं एक ही फीस में होगी। जहां प्रयास कोर्स फीस रूपए 160000/- जमा कराने के पश्चात विद्यार्थी पूरी तरह से मोशन एजुकेशन की जिम्मेदारी पर होगा।

◆ मोशन प्रयास में 11वीं एवं 12वीं के हिंदी-इंग्लिश जैसे अनिवार्य विषय की तैयारी के लिए कोई सुविधा होगी?
मोशन प्रयास के अंतर्गत आवश्यकता अनुसार बोर्ड परीक्षाओं की दृष्टि से हिंदी एवं इंग्लिश जैसे विषयों की तैयारी भी विषय विशेषज्ञों द्वारा करवाई जाएगी जिससे विद्यार्थी को बेहतर बोर्ड स्कोर में भी मदद मिल सकेगी।

◆ मोशन प्रयास के अंतर्गत छात्र एवं छात्राओं के लिए किस तरह से हॉस्टल की सुविधा प्रदान की जाएगी?
मोशन प्रयास में छात्र एवं छात्राओं के लिए

पृथक-पृथक हॉस्टल की व्यवस्था होगी जिससे वे शांत एवं सुरक्षित वातावरण में अध्ययन कर सकें।

◆ मोशन प्रयास के अंतर्गत अध्ययन करने वाले विद्यार्थियों को क्लासरूम कोचिंग के अतिरिक्त और क्या सुविधा मिलेगी?
मोशन प्रयास के अंतर्गत अध्ययन करने वाले विद्यार्थियों को क्लासरूम कोचिंग के अतिरिक्त मोशन लर्निंग एप की सुविधा भी दी जाएगी जिससे वे वीडियो लेक्चर के माध्यम से रिवीजन कर सकते हैं और क्लास की लाइव रिकॉर्डिंग को फिर से दोहराने के साथ साथ ही अपने स्तर के अनुसार टेस्ट देकर अपनी तैयारी को परख सकते हैं।

◆ मोशन प्रयास में क्या केवल मेडिकल एवं इंजीनियरिंग की तैयारी करावाई जाएगी। 12वीं बोर्ड की तैयारी कैसे करें?
मोशन प्रयास के अंतर्गत हर छोटे से लेकर बड़े टॉपिक को इस तरह से पढ़ाया जाएगा कि विद्यार्थियों को मेडिकल अथवा इंजीनियरिंग के साथ ही 11वीं एवं 12वीं की भी तैयारी हो सके। विद्यार्थियों को इसके लिए अतिरिक्त कोचिंग लेने की आवश्यकता नहीं होगी।

◆ मोशन प्रयास में फीस जमा करने का तरीका?
मोशन प्रयास कोर्स में रजिस्ट्रेशन होने के बाद स्टूडेंट बैंक की ब्याज रहित आसान मासिक किश्तों में अपनी फीस जमा कर सकता है।

◆ मोशन प्रयास में कौन-कौन सी कक्षा का प्रस्ताव दिया जा रहा है?
मोशन प्रयास में कक्षा 11वीं अथवा 12वीं साइंस के विद्यार्थियों को मेडिकल अथवा इंजीनियरिंग प्रवेश के साथ साथ बोर्ड परीक्षा एवं 12वीं पास विद्यार्थियों को पूरी तरह से मेडिकल अथवा इंजीनियरिंग प्रवेश परीक्षा की तैयारी करवाई जावेगी।

कोटा कोचिंग में पहली बार...

हिन्दी माध्यम
के विद्यार्थियों की कामयाबी का
मोशन प्रयास

नीट एवं जेईई
कक्षा 11वीं, 12वीं एवं
12वीं पास विद्यार्थियों के लिए



न्यूनतम फीस, सर्वश्रेष्ठ सुविधाएँ : मोशन प्रयास

कोचिंग+स्कूल+हॉस्टल+खाना ₹ 1,60,000*

सिर्फ कोचिंग ₹ 75,000*

व्याज रहित आसान मासिक किश्तों की सुविधा उपलब्ध।

* प्रतिवर्ष

कोर्स की अधिक जानकारी के लिए : <https://motion.ac.in/prayas/>

Click Now

Umeed Rank Ki Ho Ya Selection Ki, JEET NISCHIT HAI!

MOTION®



MOST PROMISING RANKS PRODUCED BY MOTION FACULTIES

NEET / AIIMS

- AIR-1 TO 10
25 TIMES
- AIR-11 TO 25
39 TIMES
- AIR-26 TO 50
43 TIMES
- AIR-51 TO 100
78 TIMES

JEE MAIN+ADVANCED

- AIR-1 TO 10
8 TIMES
- AIR-11 TO 25
6 TIMES
- AIR-26 TO 50
18 TIMES
- AIR-51 TO 100
30 TIMES

OLYMPIADS (6TH TO 10TH)

1105+	50+	168+	150+
PRMO	IJSO	NTSE	NSO & IOS
105+	37+	269+	97+
IMO	ITHO	NSTSE	IEO
			RMO



NITIN VIJAY (NV Sir)
Founder & CEO

NATION'S BEST SELECTION PERCENTAGE (%) RATIO

STUDENT QUALIFIED IN NEET

2021	3296 / 3411 = 93.12%
2020	2663 / 2843 = 93.66%
2019	2041 / 2212 = 92.27%

STUDENT QUALIFIED IN JEE ADVANCED

2021	1256 / 2994 = 41.95%
2020	994 / 2538 = 39.16%
2019	969 / 2105 = 36.53%

STUDENT QUALIFIED IN JEE MAIN

2021	2994 / 4089 = 73.25%
2020	2538 / 3554 = 71.44%
2019	2288 / 3316 = 68.99%

Dear Students,

Which one would you choose a rank or just the selection? If you take my advice don't pressurize yourself, just concentrate on your studies and continue working hard. Once a student starts preparing for NEET/JEE exam, their entire focus must be on systematic preparation for the selection. At Motion Education, we ensure to cater to every student's need, our teachers impart lessons after understanding the psychology of students and help them in attaining stress-free results. Through our Classroom program aided with technology, we facilitate a highly advanced nurturing platform & believe in Customising studying techniques helping students in strengthening their concepts and making their exam preparations more effective.

NITIN VIJAY (NV Sir) Founder & CEO

Admission Open for **KOTA CLASSROOM**
Class 5th to 12th Pass Students

JEE | NEET | NTSE | Boards | Olympiads

Class 12th to 13th Moving Students
NEET 2023
ACHIEVER BATCH

Starting From : 20th & 27th July 2022

English & Hindi Medium

Class 10th to 11th Moving Students
NEET 2024
NURTURE BATCH

Starting From : 27th July 2022

English & Hindi Medium

Get upto **100% SCHOLARSHIP**
on the basis of NEET 2022

NEET Score	FEE After Scholarship
600+	10,000 (Kit Cost)
571-600	22,881
551-570	34,322
531-550	40,042
511-530	45,762
491-510	51,483
471-490	57,203
451-470	62,923
431-450	68,644
351-430	80,084
Only Qualified	91,525

*GST Extra

For more details about course : <https://bit.ly/neet2023dropperbatch>



1800 212 1799

Corporate Office : 394, Rajeev Gandhi Nagar, Kota (Raj.) | www.motion.ac.in

JEE Campus (At Kota) : "Drona" E-5-II, Road Number 1, Industrial Area | NEET Campus (At Kota) : "Daksh" 638, Near CAD Circle, Dadabari

No Cost EMI available